

OEM Software Installation Guide



Contents:



[TIS Techstream Installation](#)



[HONDA HDS Installation](#)



[VOLVO VIDA Installation](#)



[VCX32 OEMSetup Installation](#)



[Start Vehicle Diagnose](#)



TIS TechStream Installation

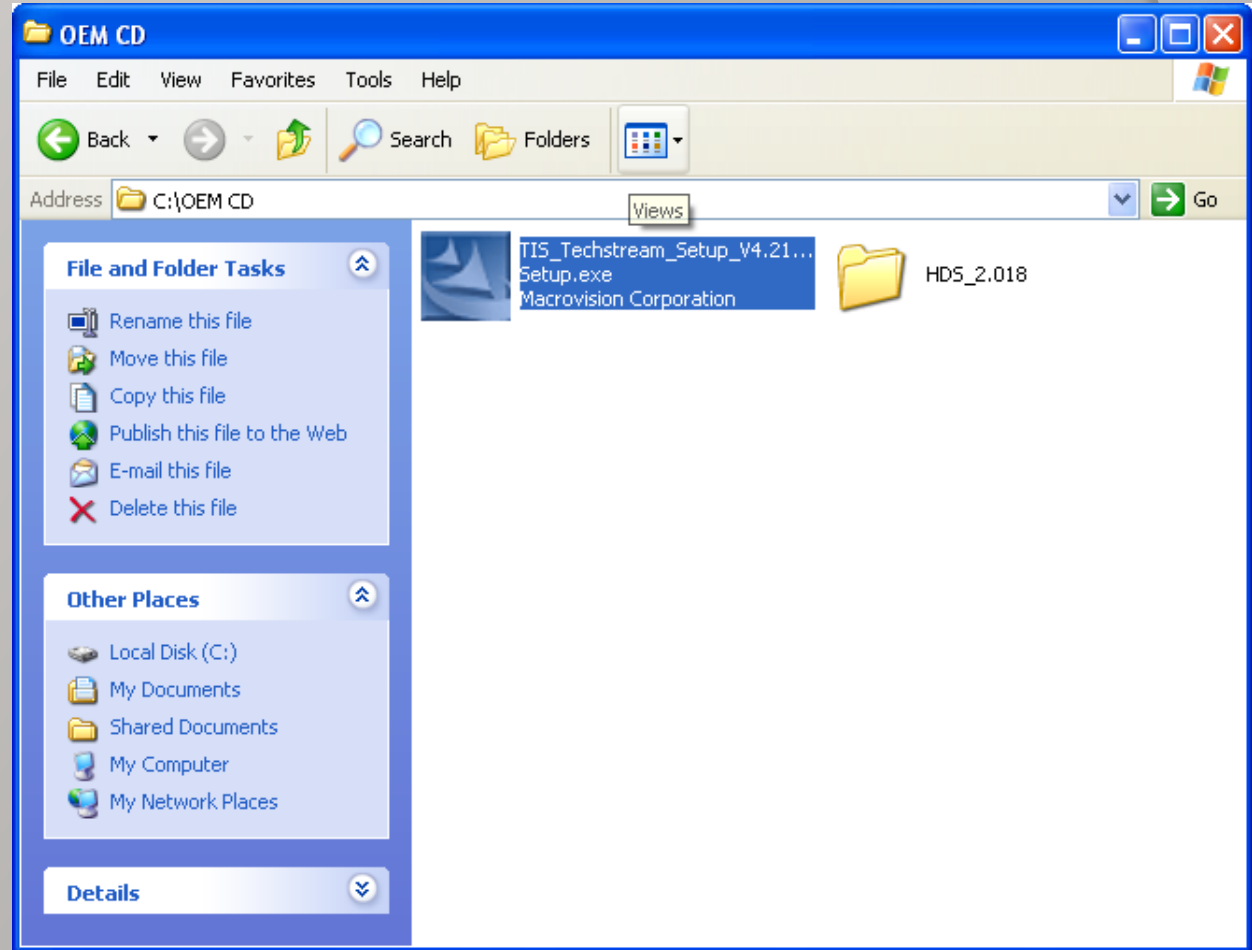
TIS Step1

In the OEM CD

You can find:

TIS_Techstream_
Setup_V4.21.002.exe

Double-click to install.



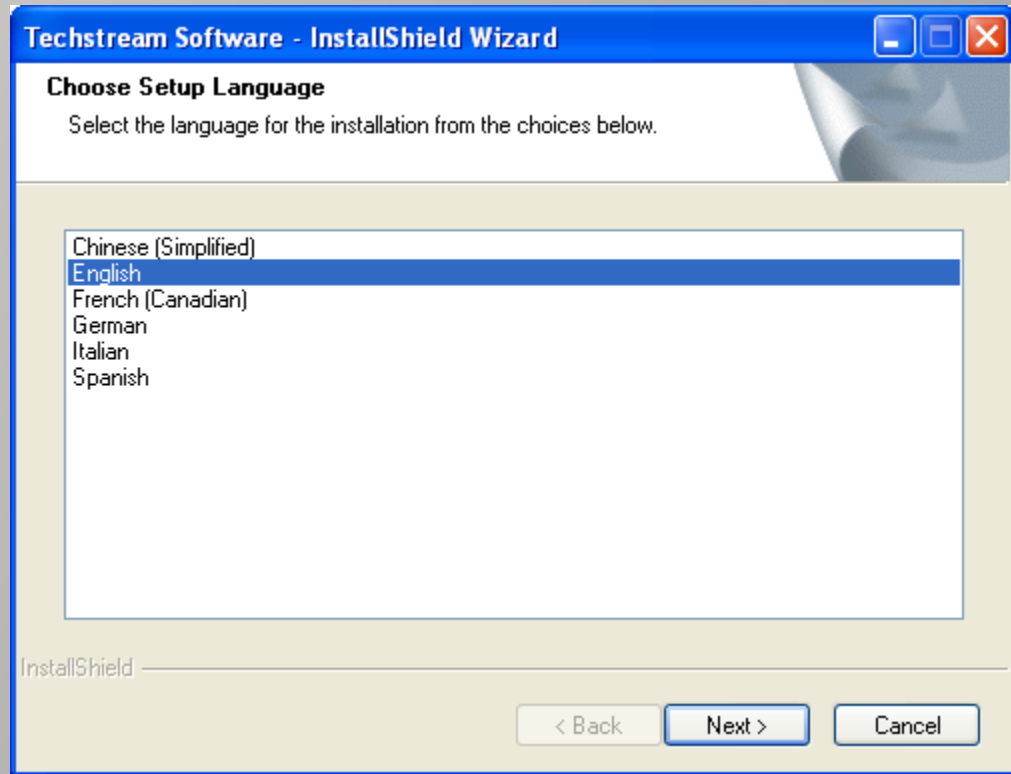


TIS TechStream Installation

TIS Step2

Select setup language

Click **【NEXT】**

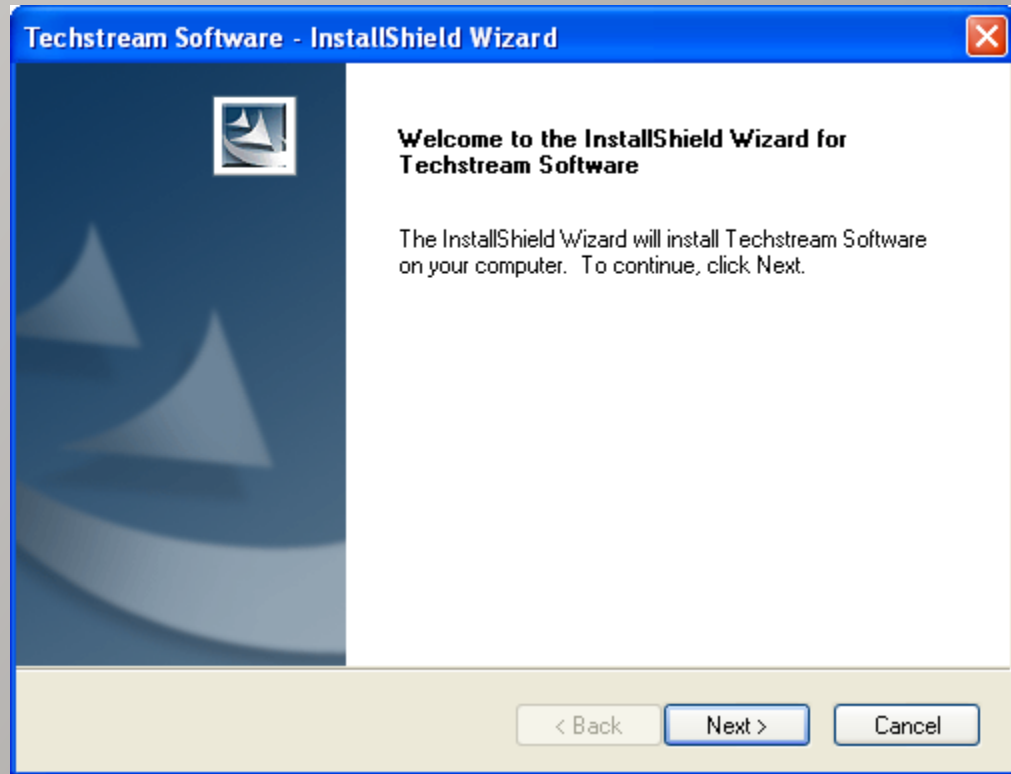




TIS TechStream Installation

TIS Step3

Click 【NEXT】





TIS TechStream Installation

TIS Step4

Input User Information

Click **【NEXT】**

Techstream Software - InstallShield Wizard

Customer Information
Please enter your information.

Please enter your name and the name of the company for which you work.

User Name:

Company Name:

InstallShield

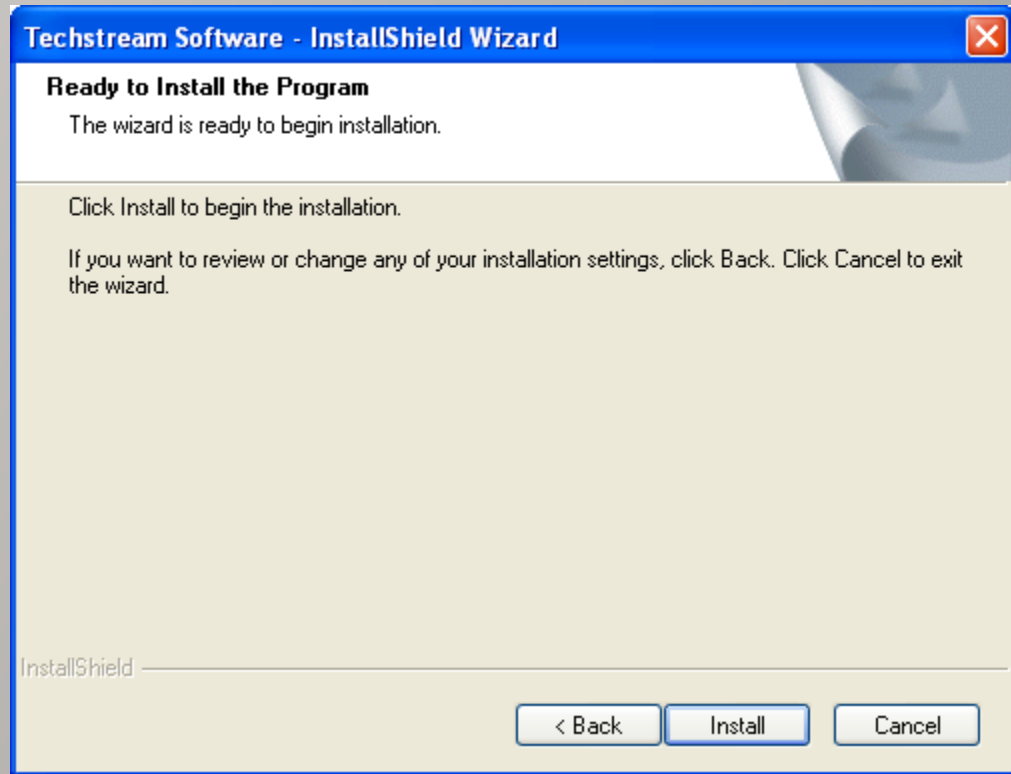
< Back Next > Cancel



TIS TechStream Installation

TIS Step5

Click 【Install】





TIS TechStream Installation

TIS Step6

Installing.....


Techstream Software - InstallShield Wizard

Setup Status

Techstream Software is configuring your new software installation.

Installing

C:\...\Toyota Diagnostics\Techstream\EU\DB\M_Italian.ddb



InstallShield

Cancel

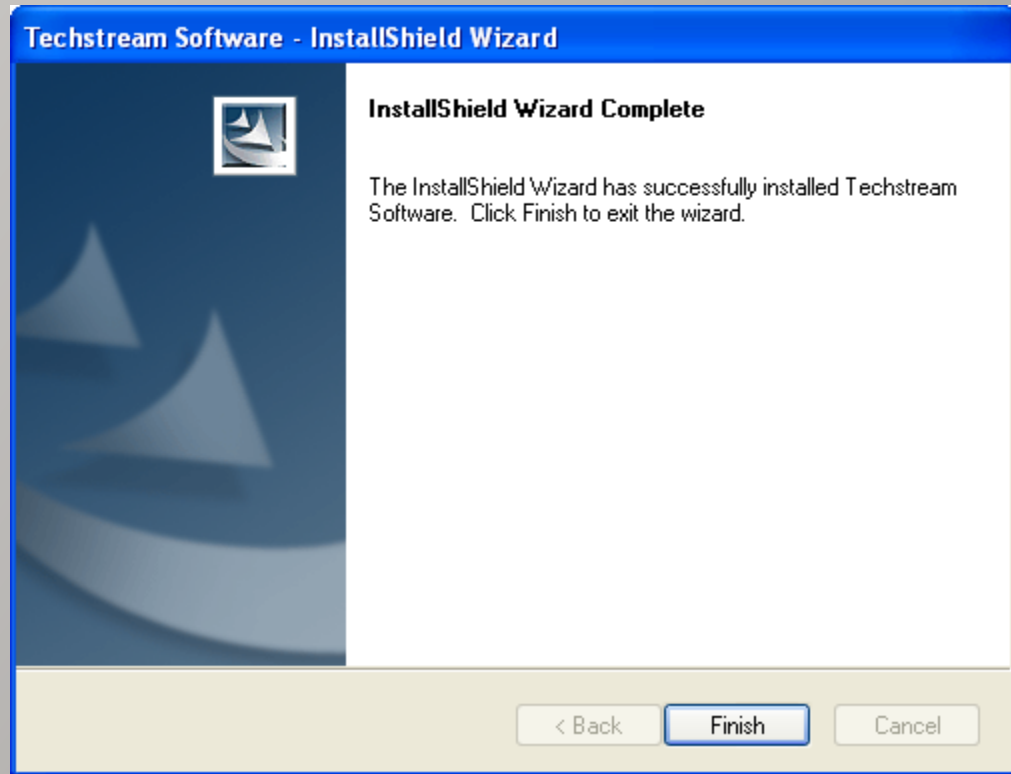


TIS TechStream Installation

TIS Step7

Install completed

Click **【Finish】**



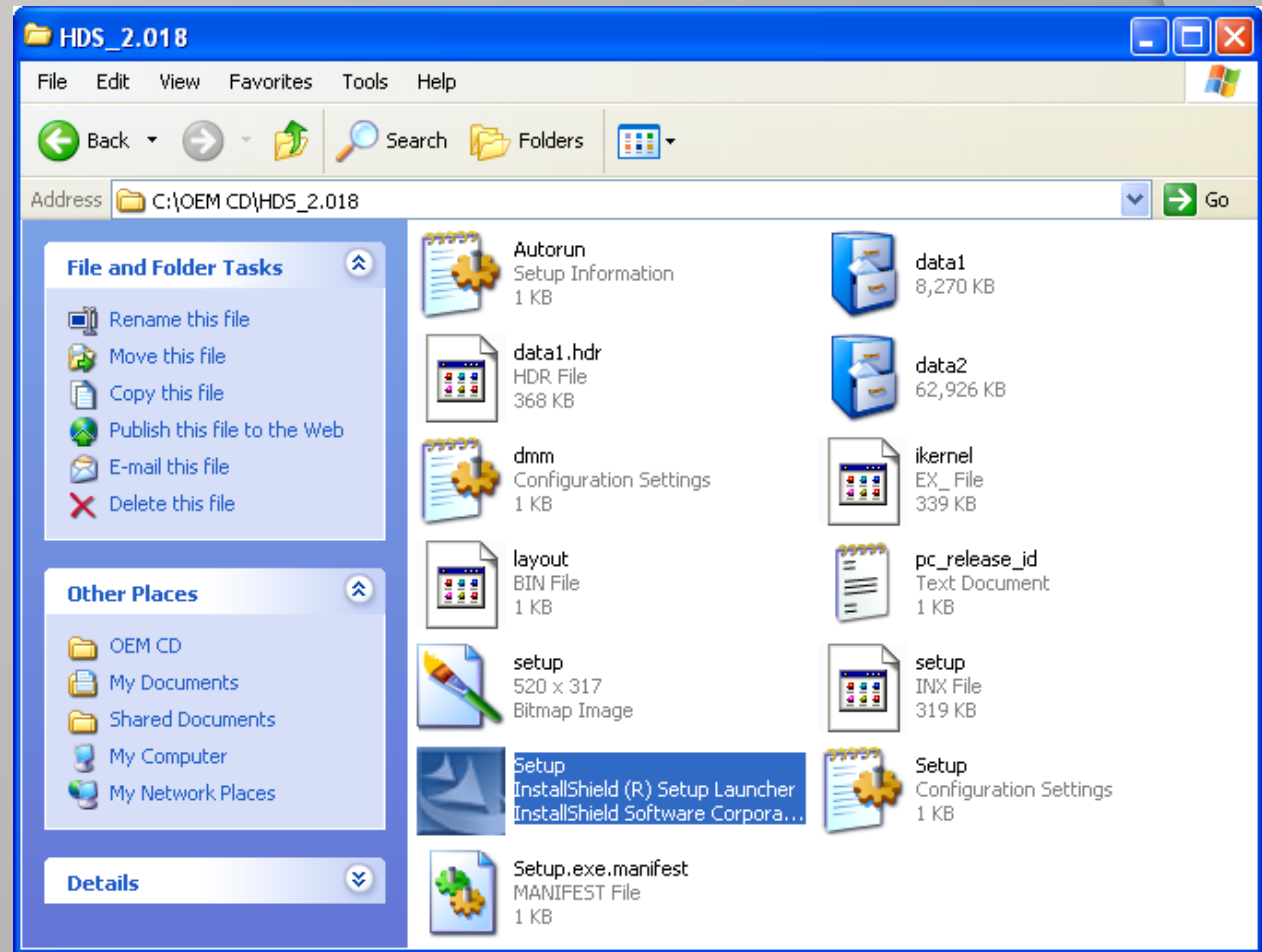


HDS Installation

HDS Step1

In the OEM CD
You can find the folder:
HDS_2.018\

Double-click Setup.exe

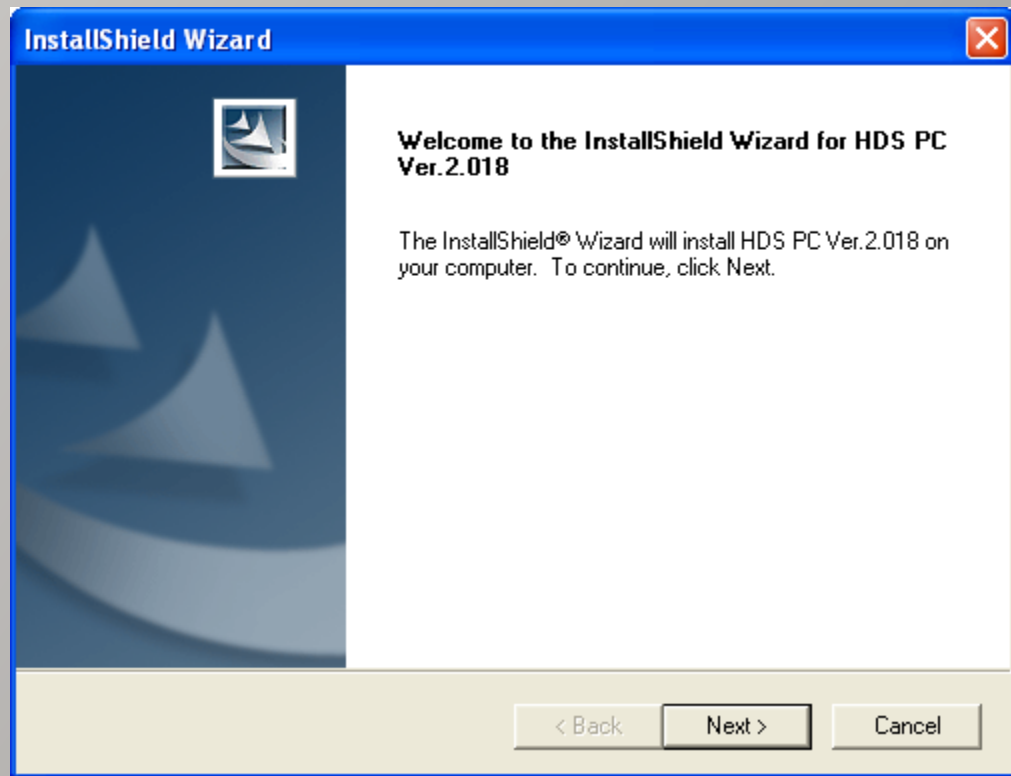




HDS Installation

HDS Step2

Click **【NEXT】**

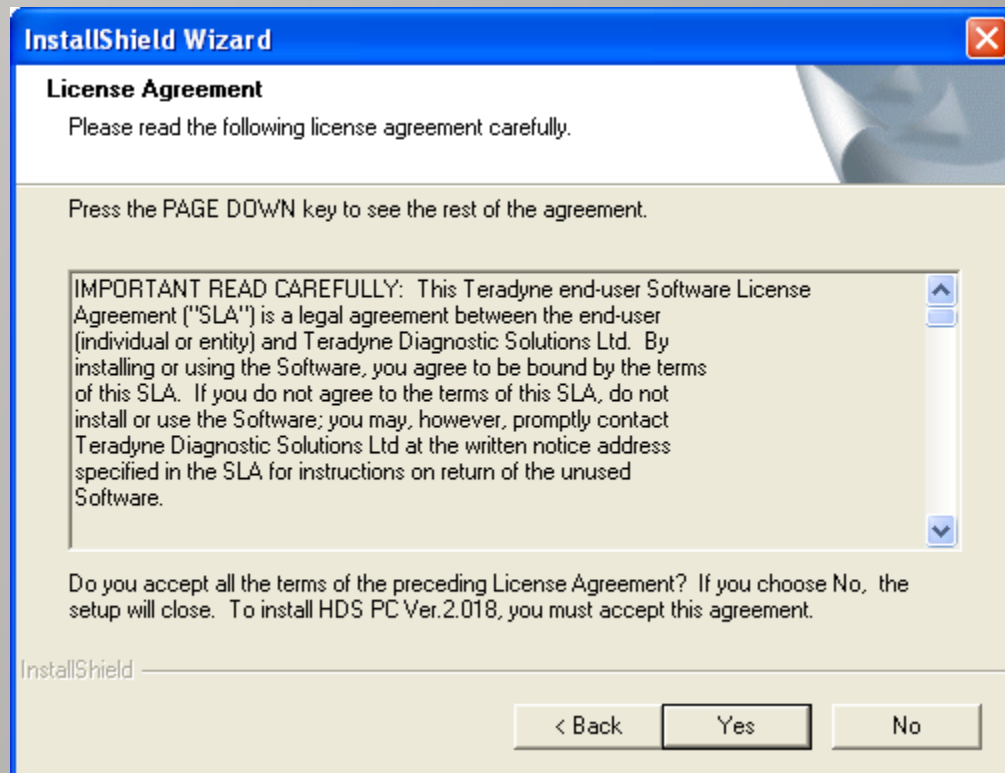




HDS Installation

HDS Step3

Click 【Yes】



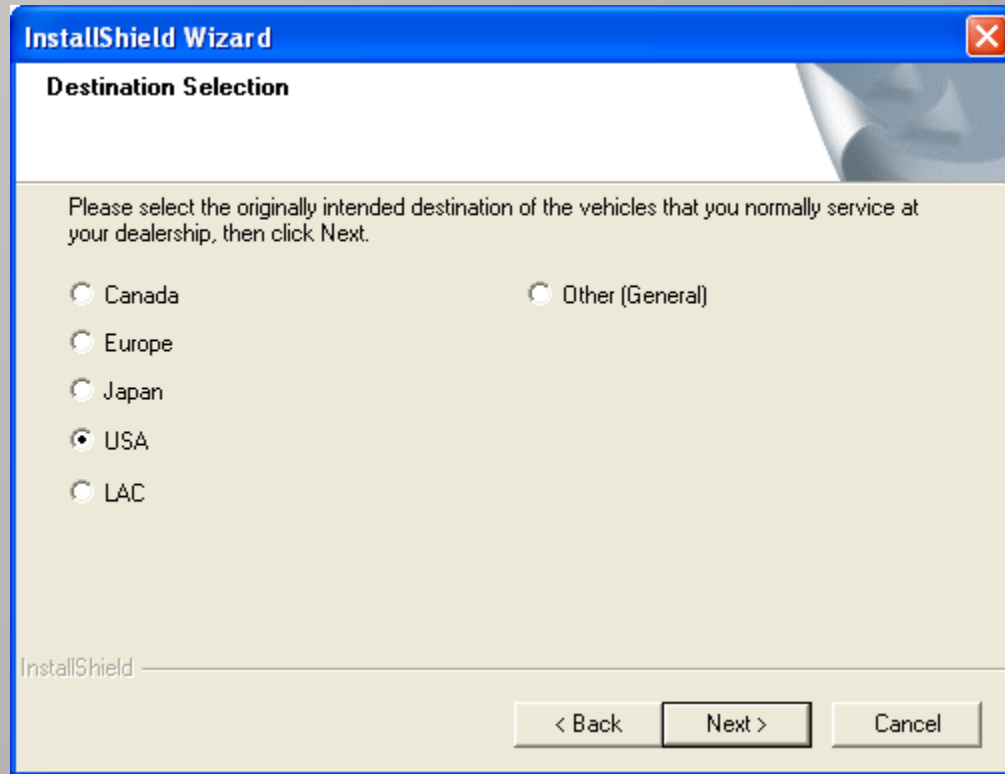


HDS Installation

HDS Step4

Select Destination:
USA

Click **【NEXT】**

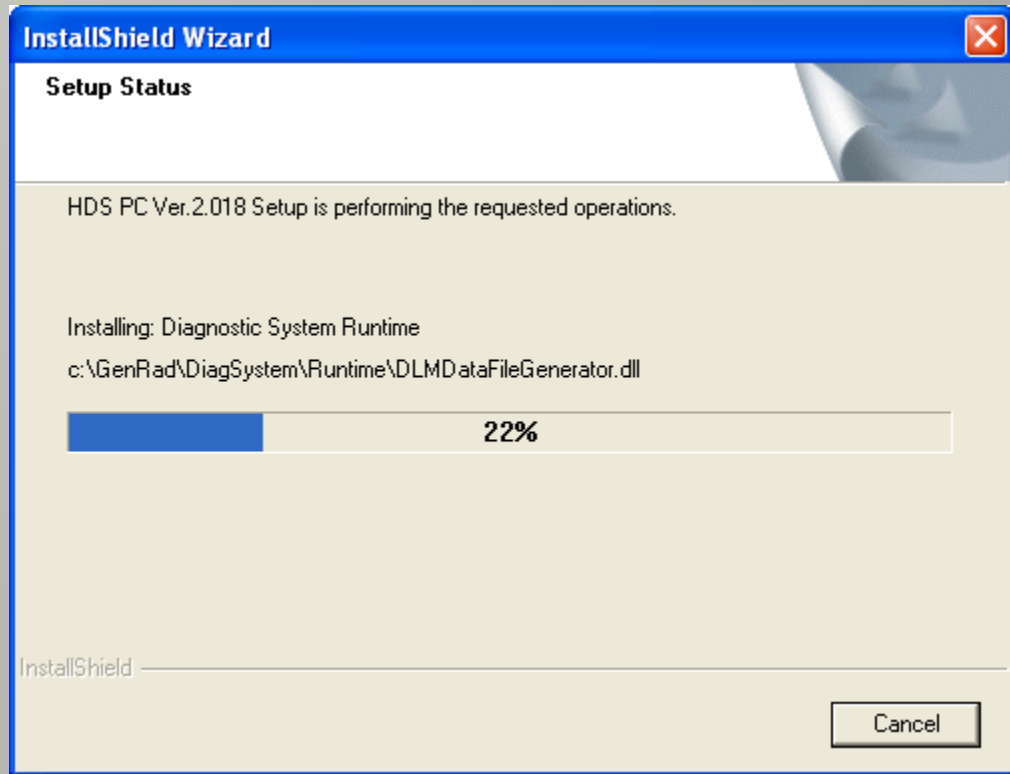




HDS Installation

HDS Step5

Installing.....





HDS Installation

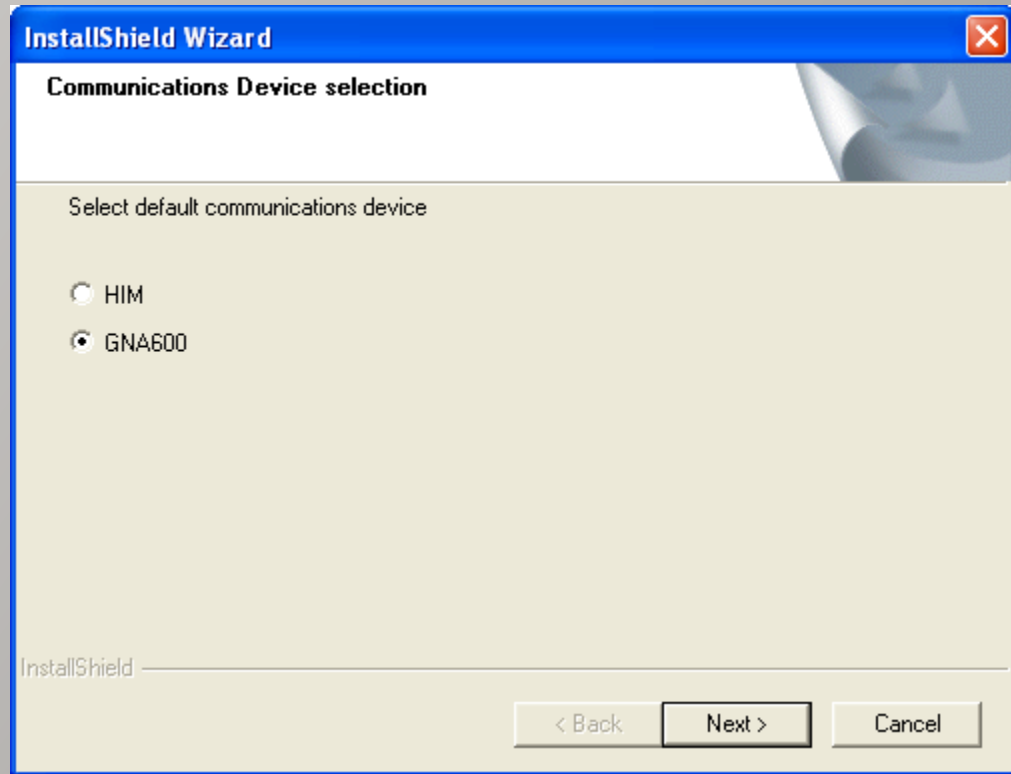
HDS Step6

Select communication

Device:

GNA600

Click **【NEXT】**





HDS Installation

HDS Step7

Click **【OK】**



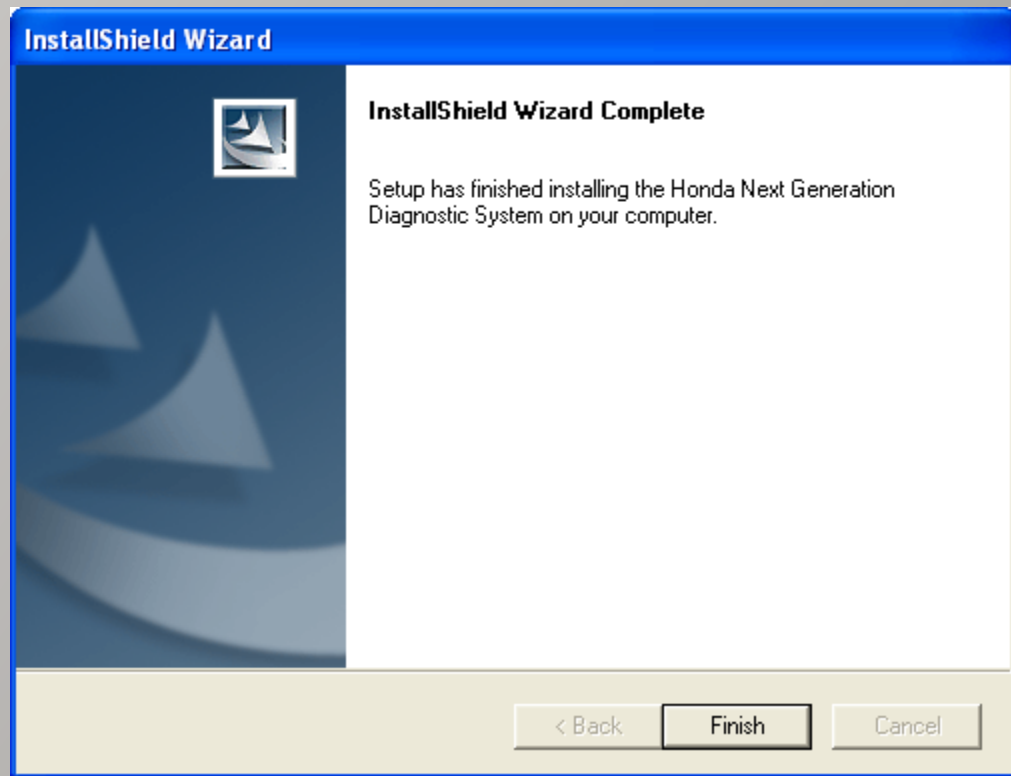


HDS Installation

HDS Step8

Install completed

Click **【Finish】**





VIDA Installation

VIDA Step1

Before the installation.

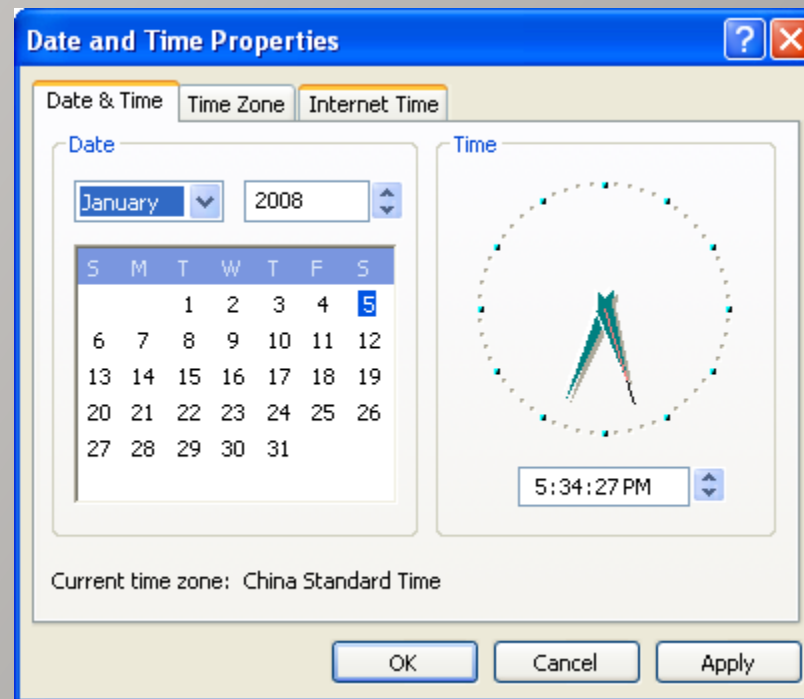
You must modify the system time earlier than Aug.2008

requirement :

DISK C:\ must be NTFS

At least 10GB ON C:\

IE must be Version6.0

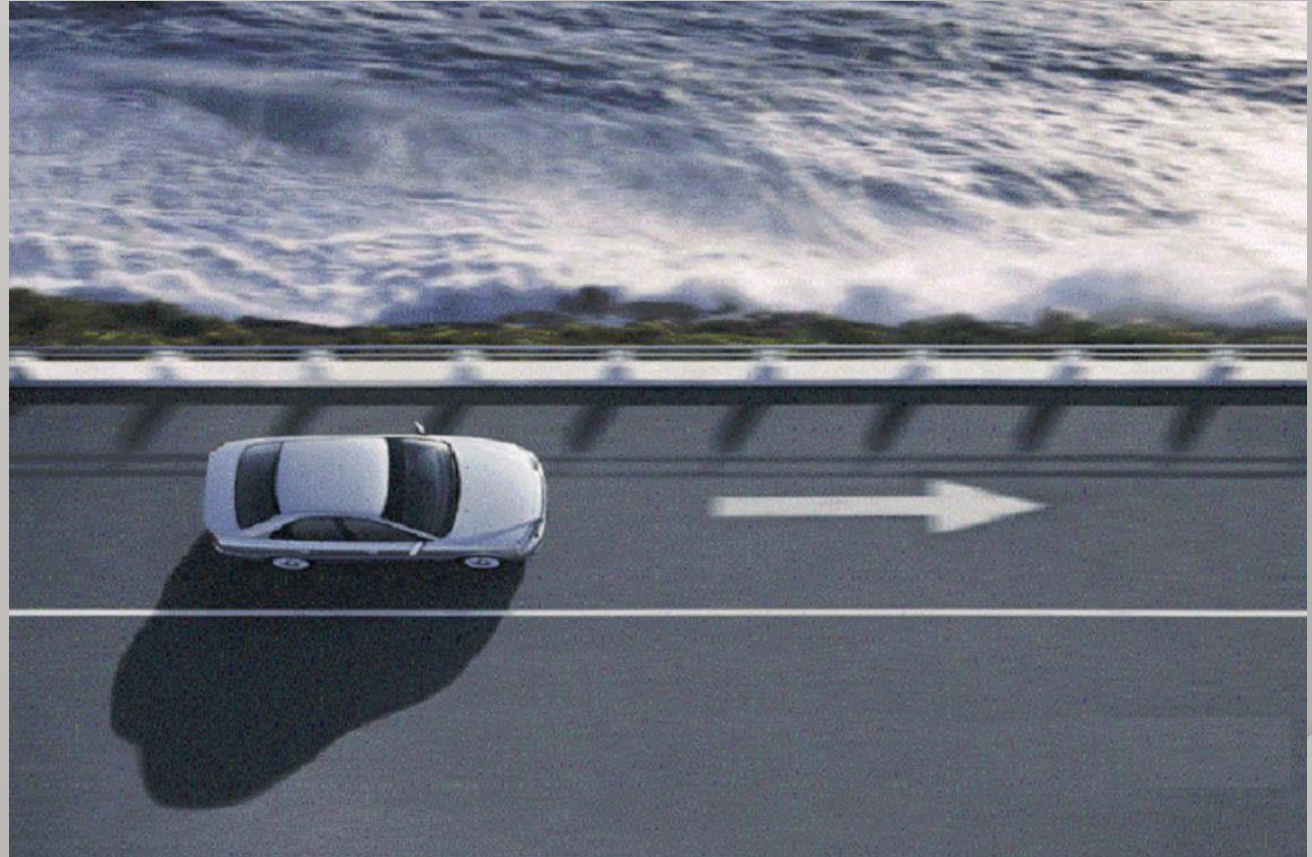




VIDA Installation

VIDA Step2

Put VIDA2008C into
the CD-ROM.
Install autorun as Fig.



If the installation does
not run automaticly,
Please run it manually:

`VIDA_Lang_Independent\dvd_extra\dvd\Vida_dvdheader\Scripts\Main\setup.exe`

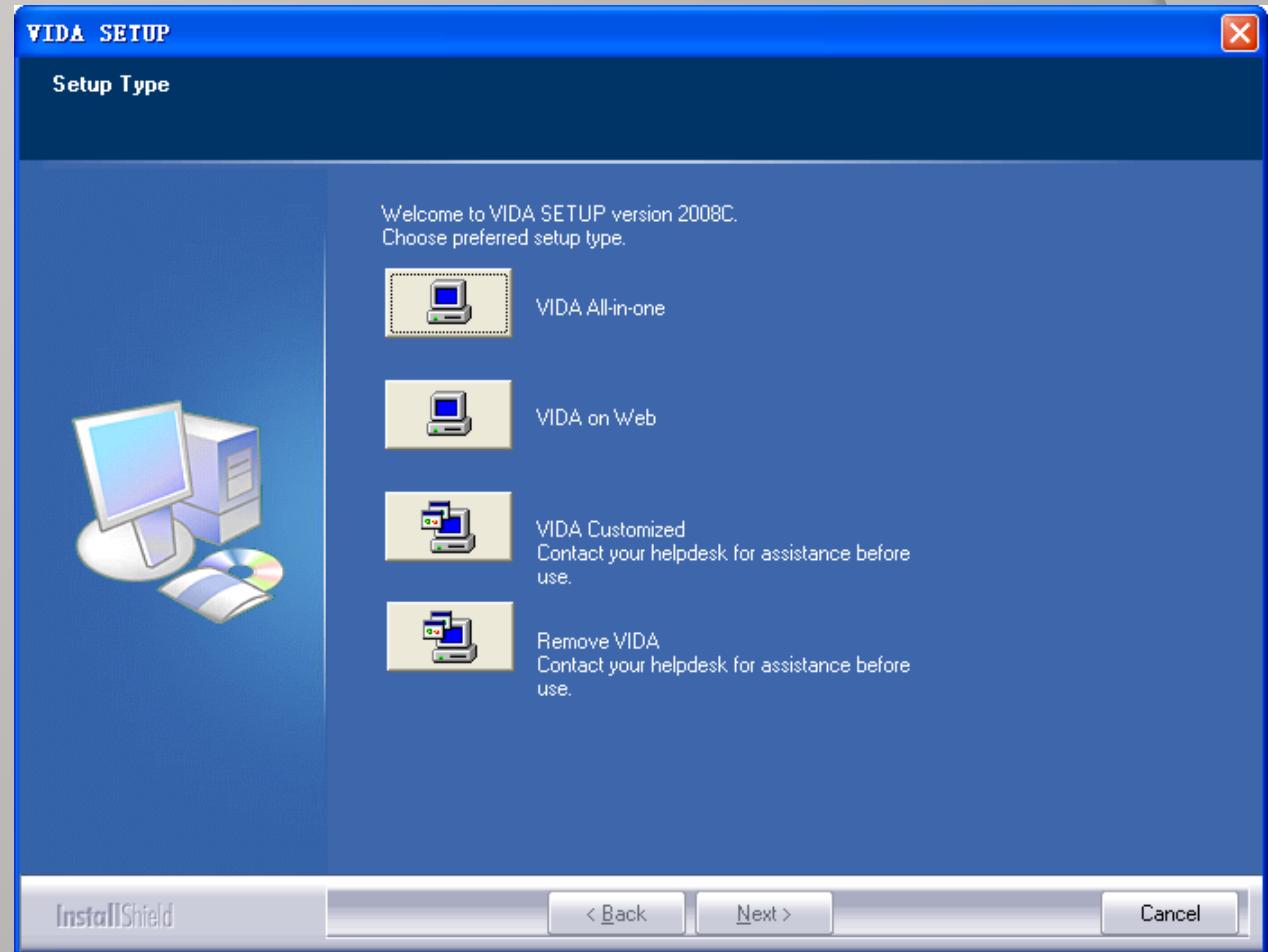


VIDA Installation

VIDA Step3

Select Setup Type:
VIDA All-in-one

Click **【NEXT】**

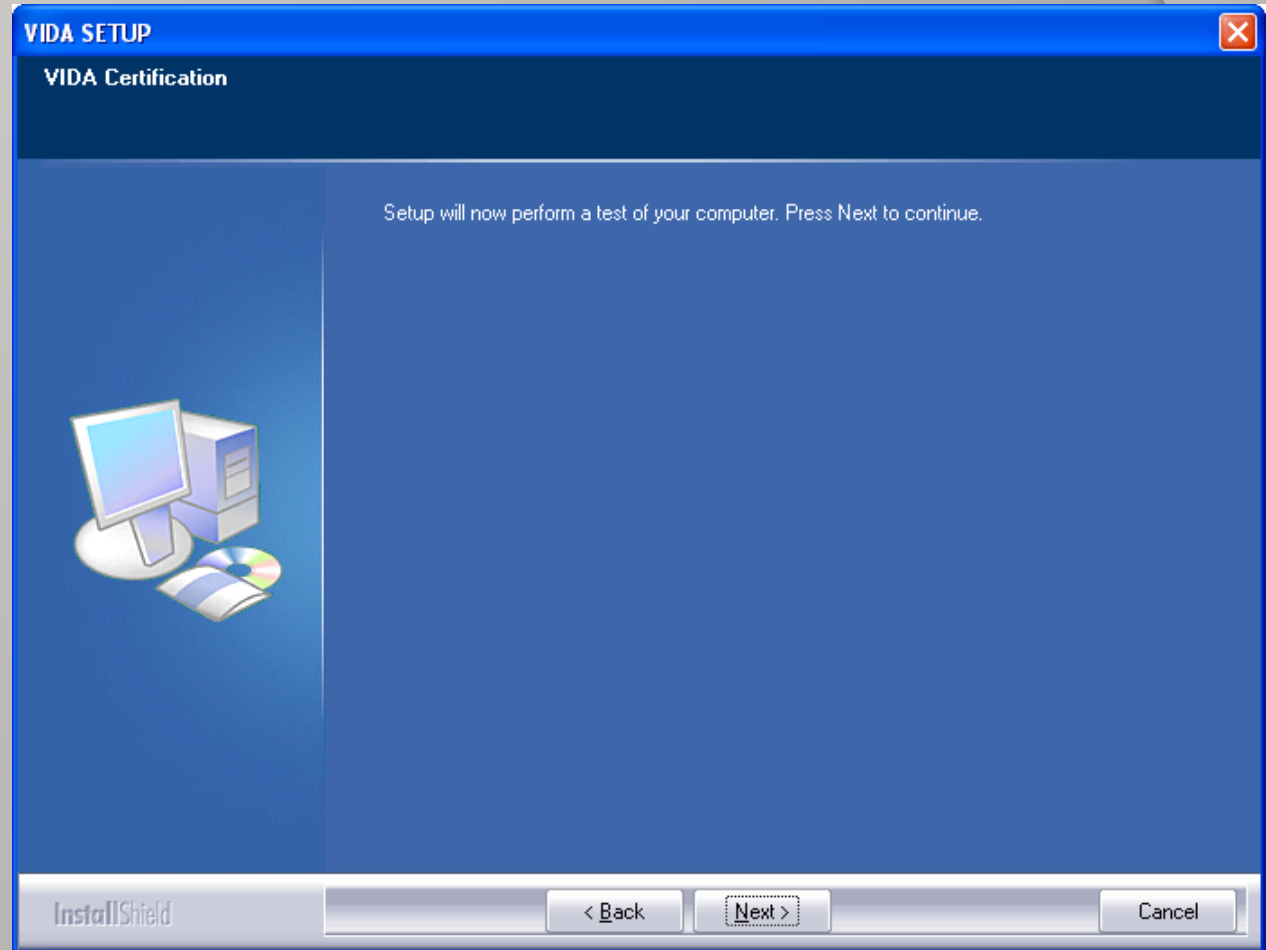




VIDA Installation

VIDA Step4

Click **【NEXT】**

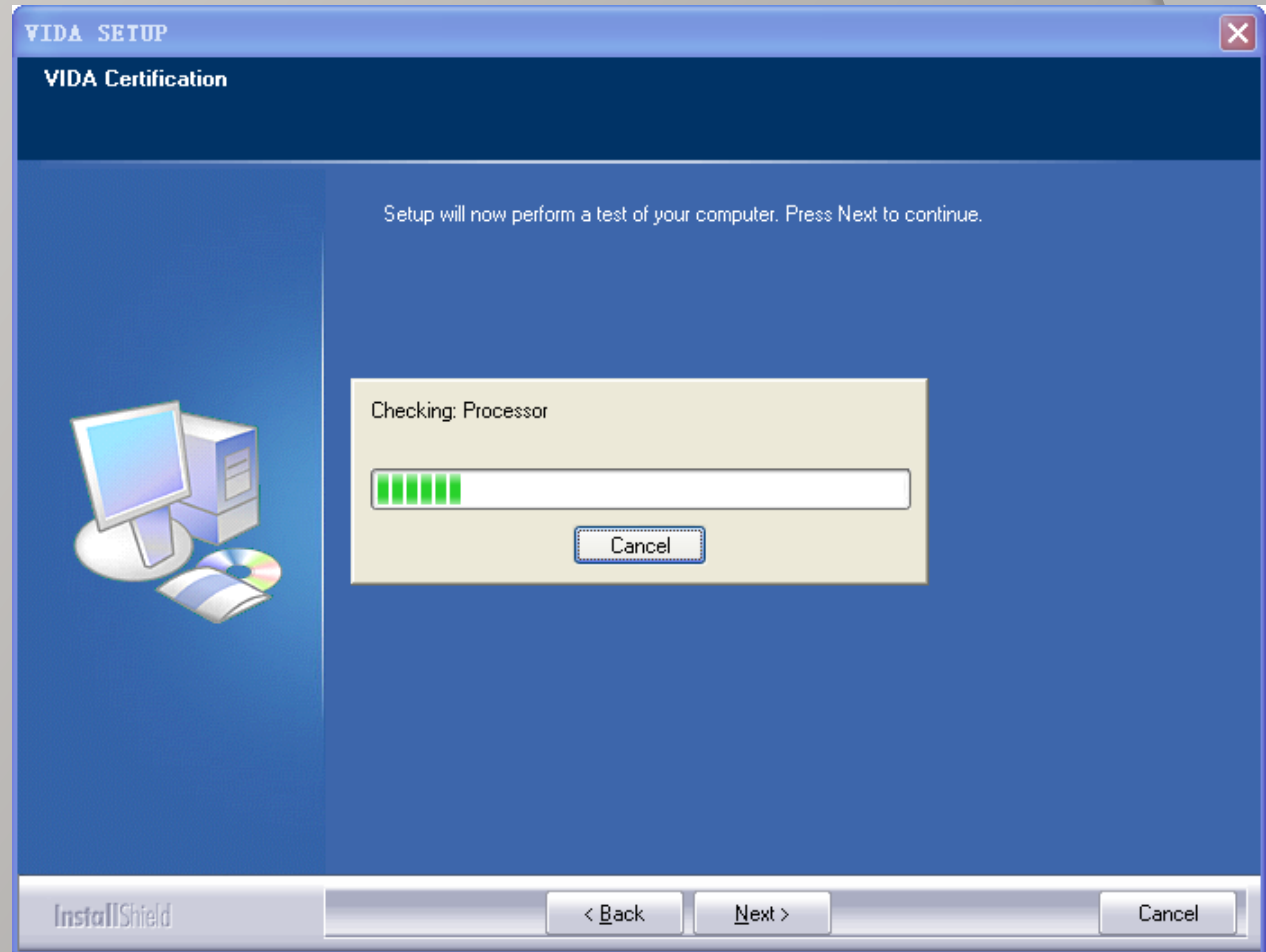




VIDA Installation

VIDA Step5

Certification.....





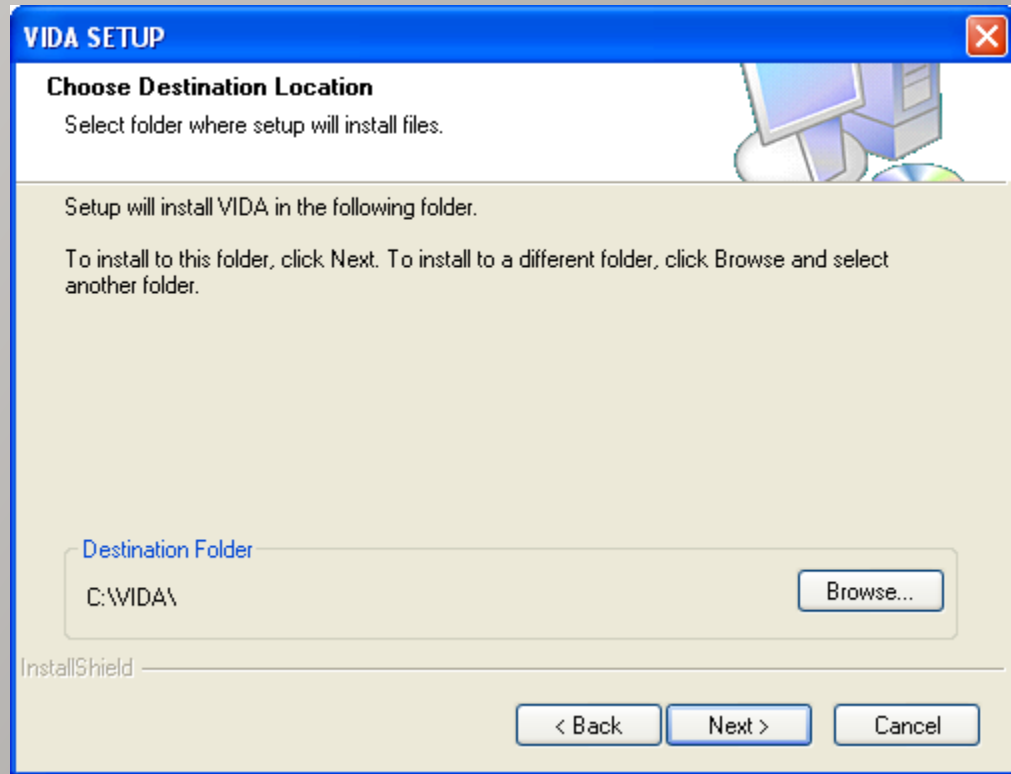
VIDA Installation

VIDA Step6

Select default folder:

C:\VIDA

Click **【NEXT】**



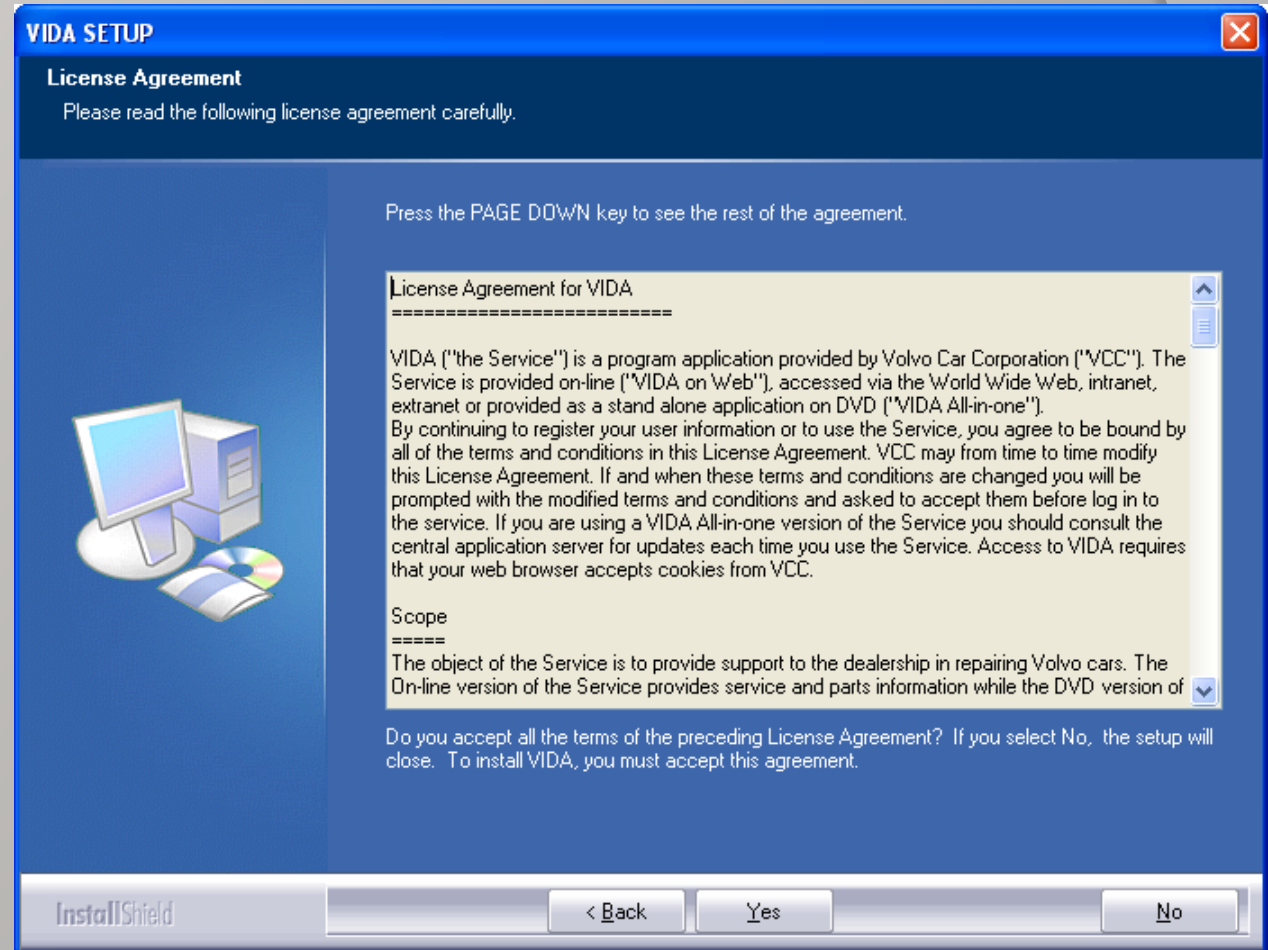


VIDA Installation

VIDA Step7

Click **【YES】** to start installation

The entire installation process will continue for 40 to 60 minutes.



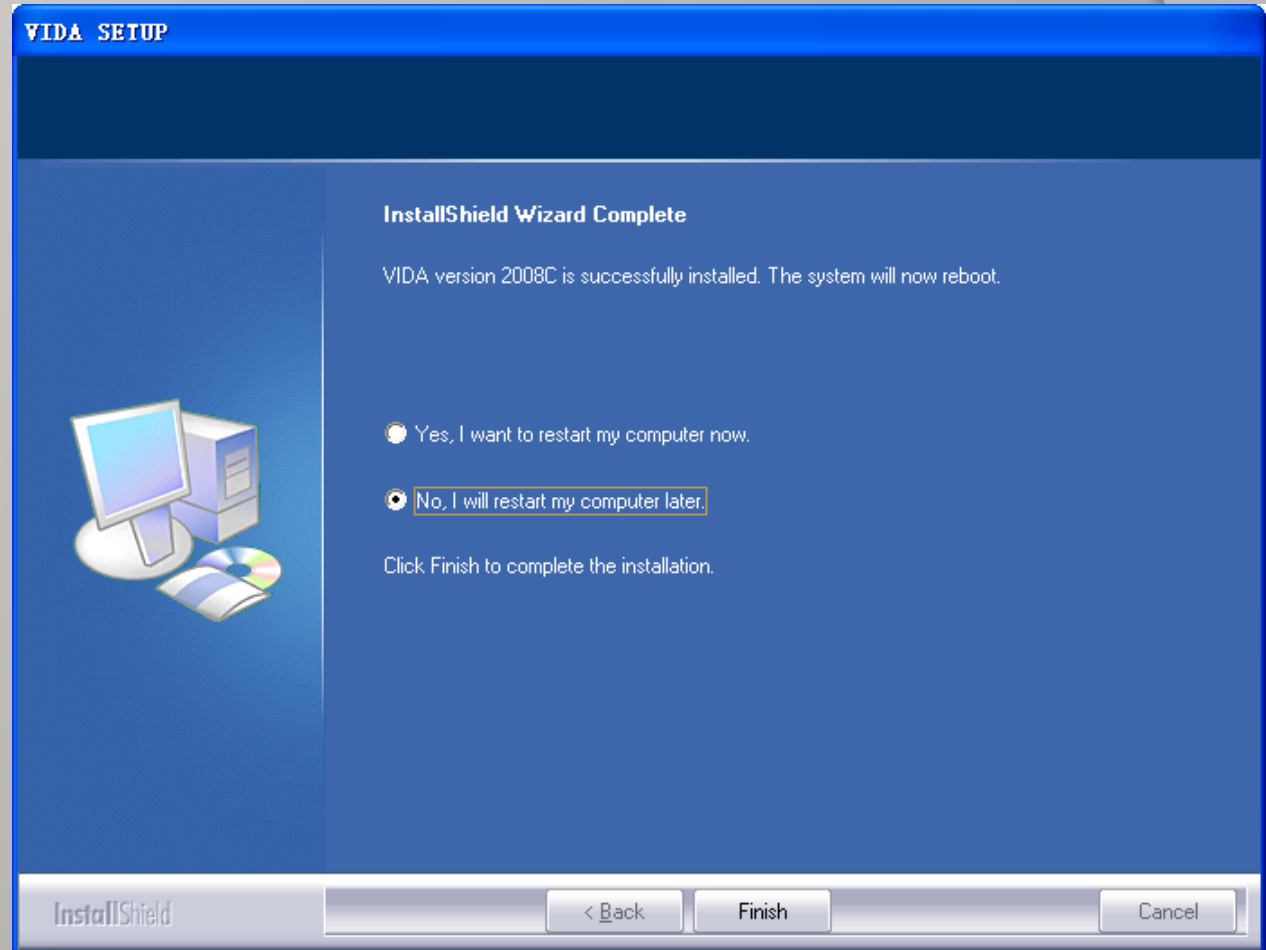


VIDA Installation

VIDA Step8

After the installation is complete, select:
“No,I will restart My Computer later”

Click **【Finish】**





VIDA Installation

VIDA Step9

Install Language Patch:

You can find the folder:

VIDA2008C_Language_Patch

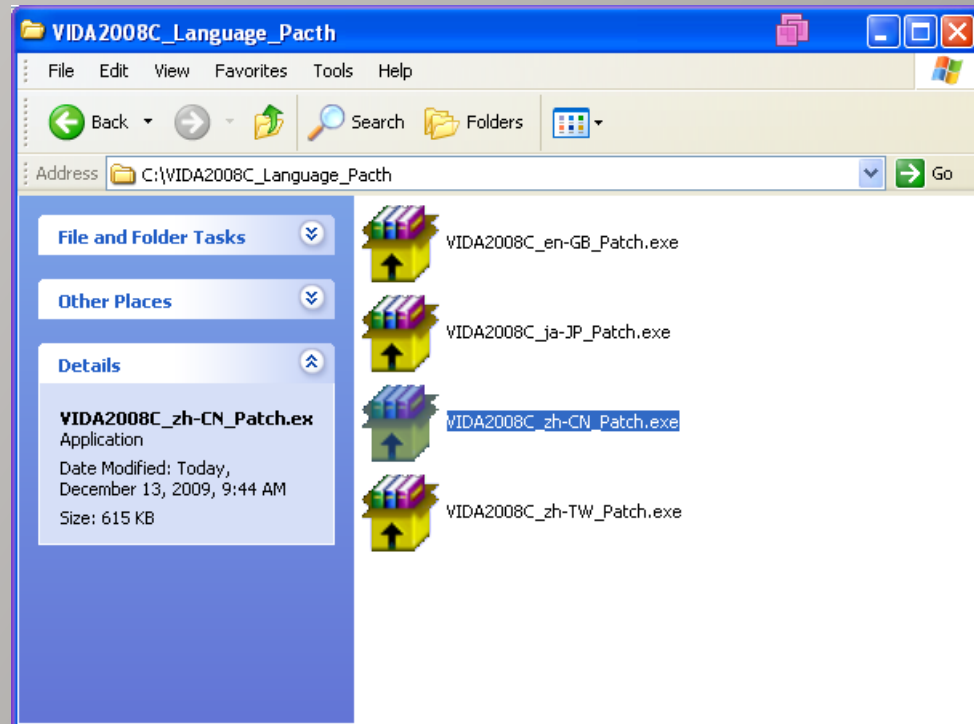
Select to install:

en-GB English

ja-JP Japanese

zh-CN Chinese

zh-TW Traditional



NOTICE:

**The default language is English
If your language is English, you
can ignore this step.**

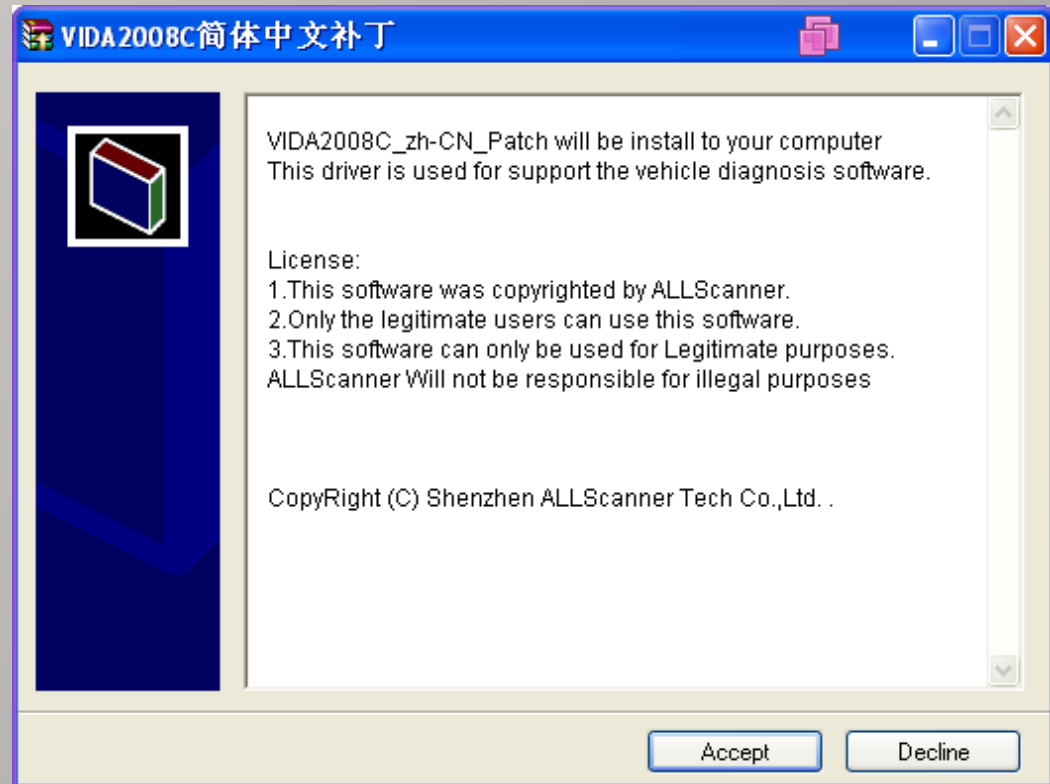


VIDA Installation

VIDA Step10

Install Language Patch:

Click **【Accept】** to install





VIDA Installation

VIDA Step11

Install completed:

Press any key to finish.

NOTICE:

Before to use VIDA,
The computer must be
reboot.

```
C:\WINDOWS\system32\cmd.exe
Stop VIDA.
Could not find process: javaw
Could not find process: vidamonitor
The MSSQL$VIDA service is stopping.
The MSSQL$VIDA service was stopped successfully.

Copying from VIDA...
    1 file(s) copied.
    1 file(s) copied.

Restart VIDA.
The MSSQL$VIDA service is starting.
The MSSQL$VIDA service was started successfully.

Press any key to continue . . .
```



VCX32 OEMSetup Installation

NOTICE:

Before install OEMSetup, You must firstly install “VCX32 Driver Install.exe”

Reference 《VCX Quick Start》。



After the installation of “VCX32 Driver Install.exe”

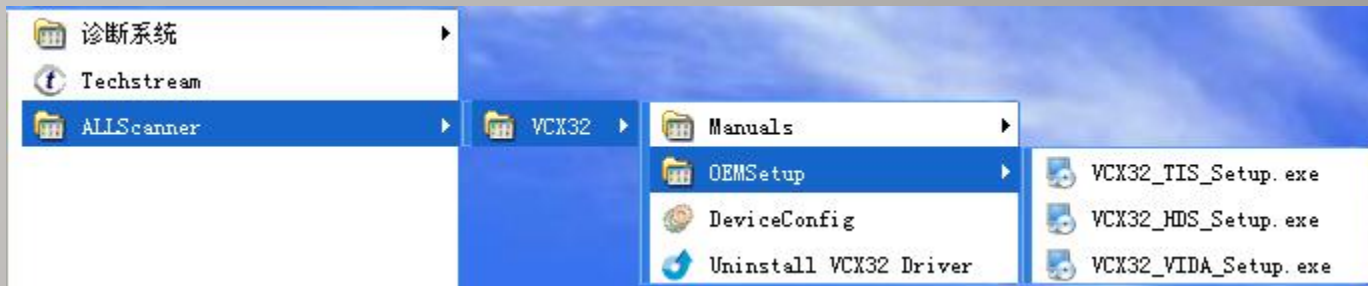
You can find the menu:Start->Program->ALLScanner->VCX32->OEMSetup->VCX32

Depending on your product configuration, Choose to install OEMSetup:

VCX32_TIS_Setup.exe OEM support for TIS

VCX32_HDS_Setup.exe OEM support for HDS

VCX32_VIDA_Setup.exe OEM support for VIDA

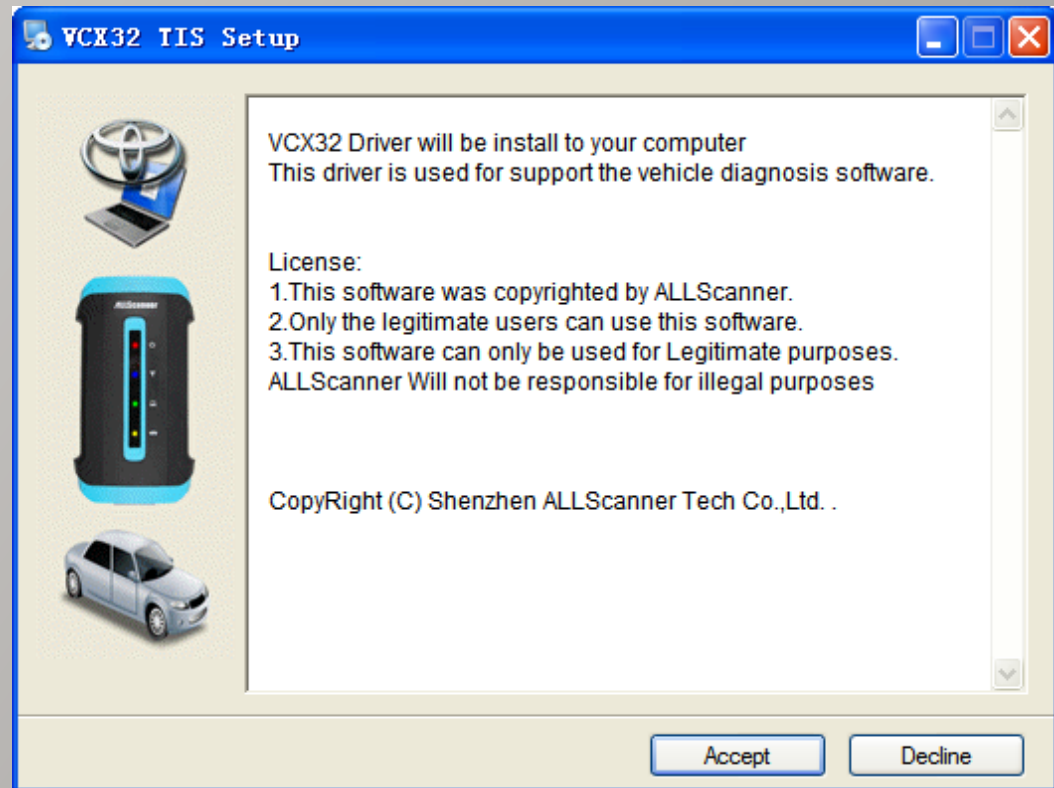




VCX32 OEMSetup Installation

VCX32 TIS Setup

Click **【Accept】**

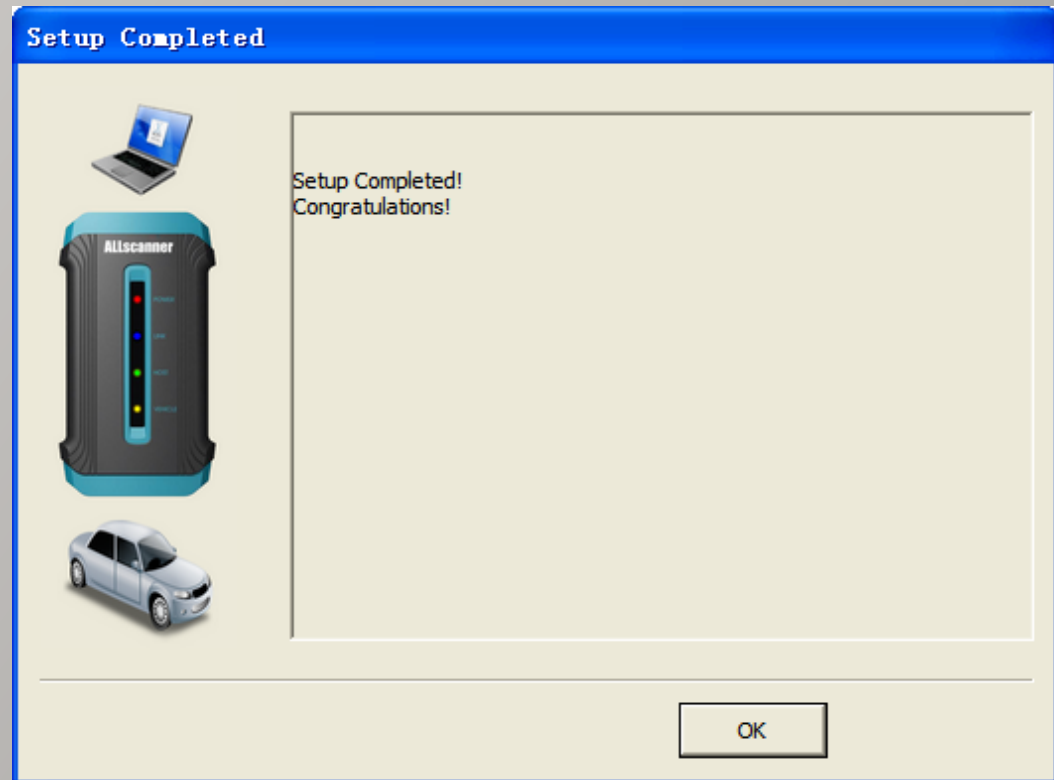




VCX32 OEMSetup Installation

VCX32 TIS Setup
Completed

Click **【OK】**

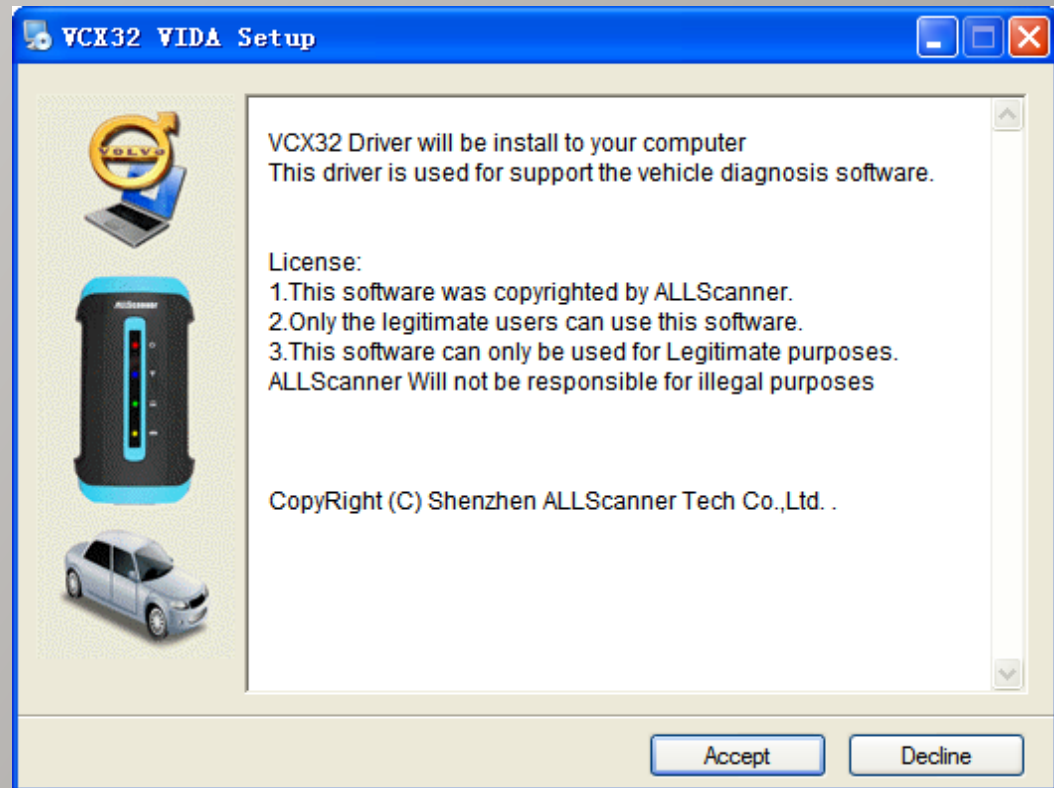




VCX32 OEMSetup Installation

VCX32 VIDA Setup

Click 【 Accept 】

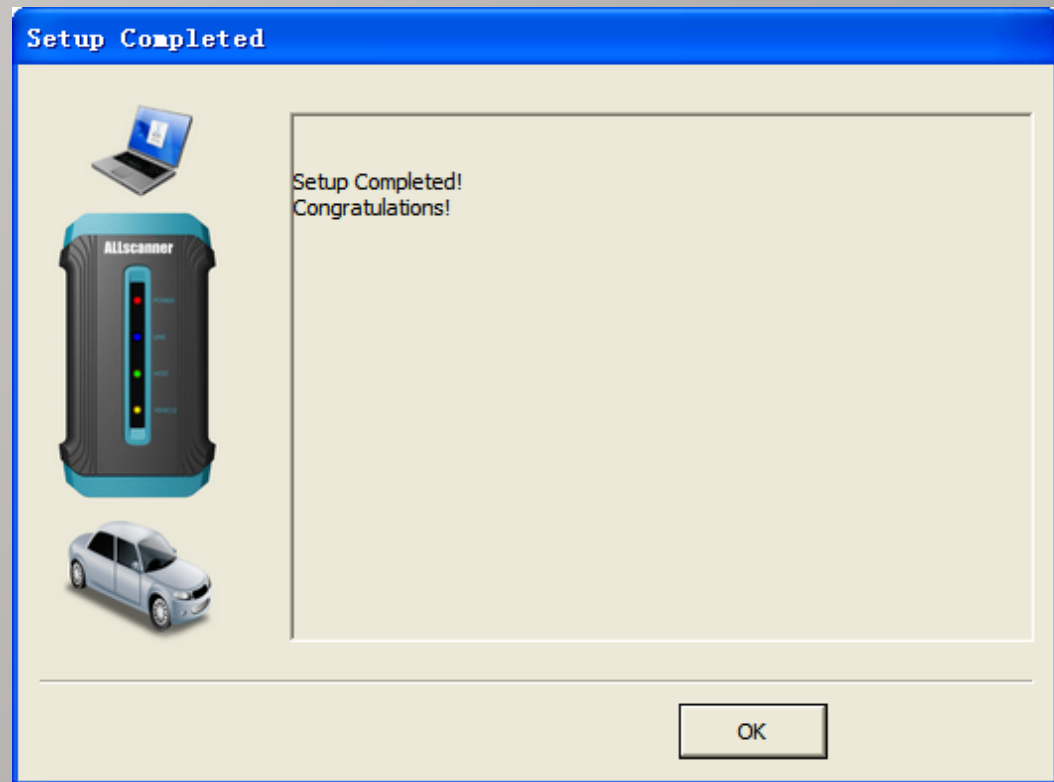




VCX32 OEMSetup Installation

VCX32 VIDA Setup
Completed

Click **【OK】**



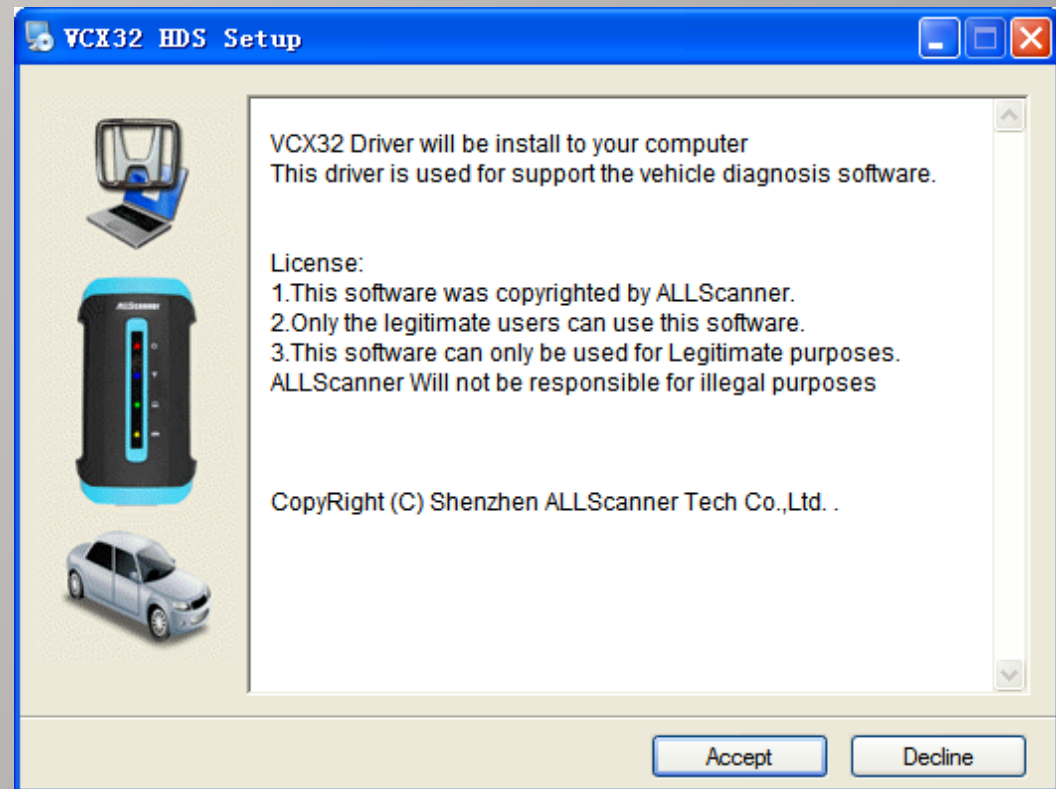


VCX32 OEMSetup Installation

VCX32 HDS Setup

Step1

Click 【 Accept 】





VCX32 OEMSetup Installation

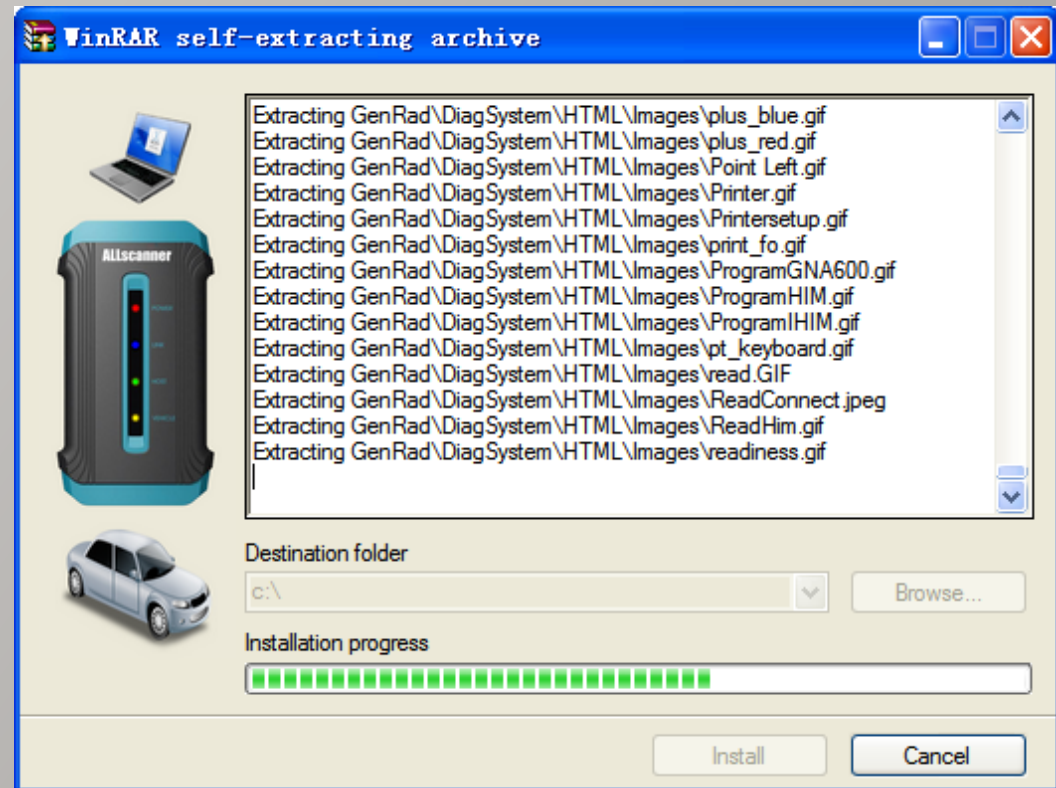
VCX32 HDS Setup

Step2

Installing.....

This process maybe report
an error message

Click **【OK】** ,Then Click
【Close】 to continue.





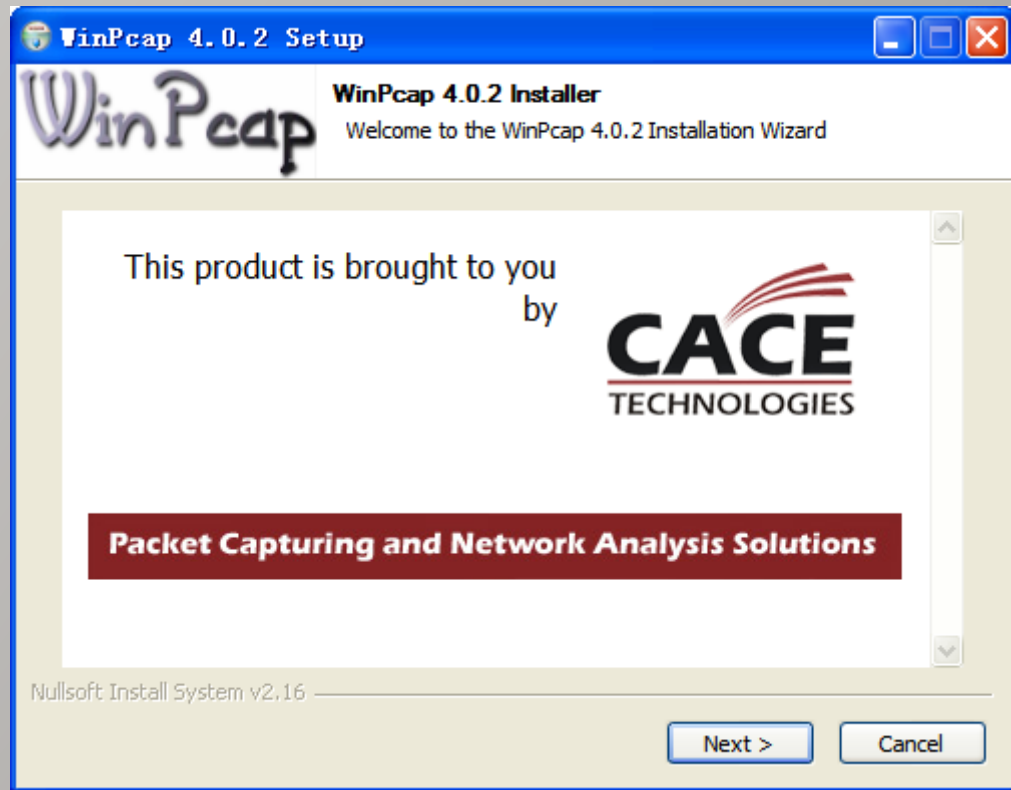
VCX32 OEMSetup Installation

VCX32 HDS Setup

Step3

Install WinPcap

Click **【Next】**





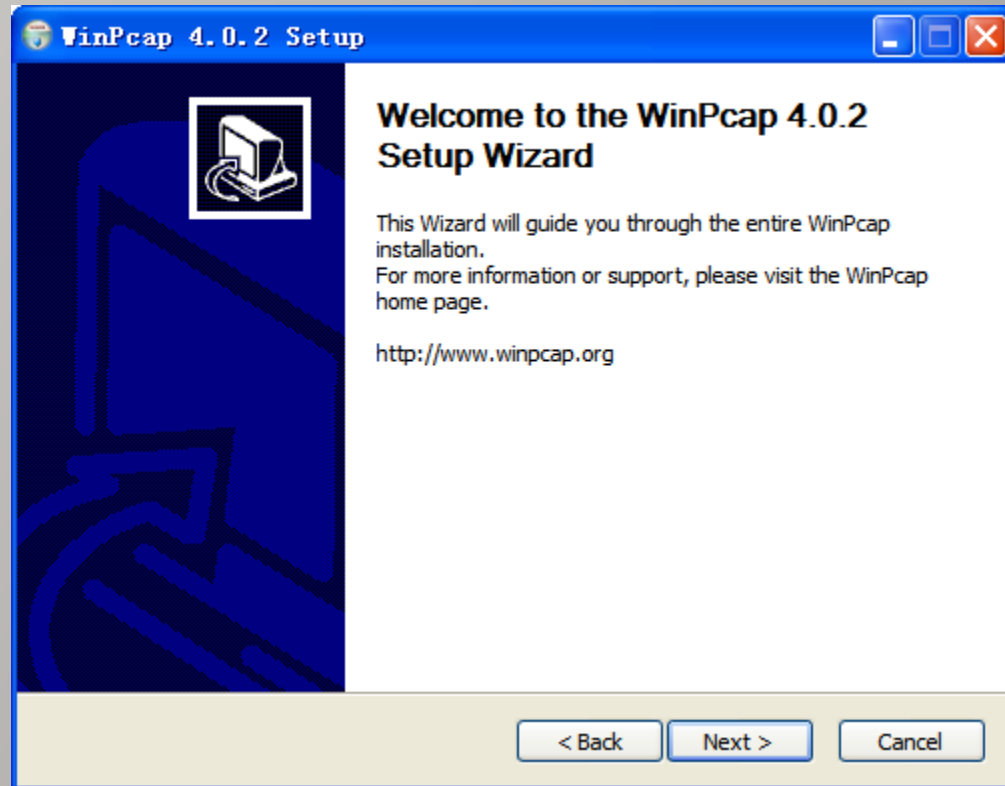
VCX32 OEMSetup Installation

VCX32 HDS Setup

Step4

Install WinPcap

Click **【Next】**





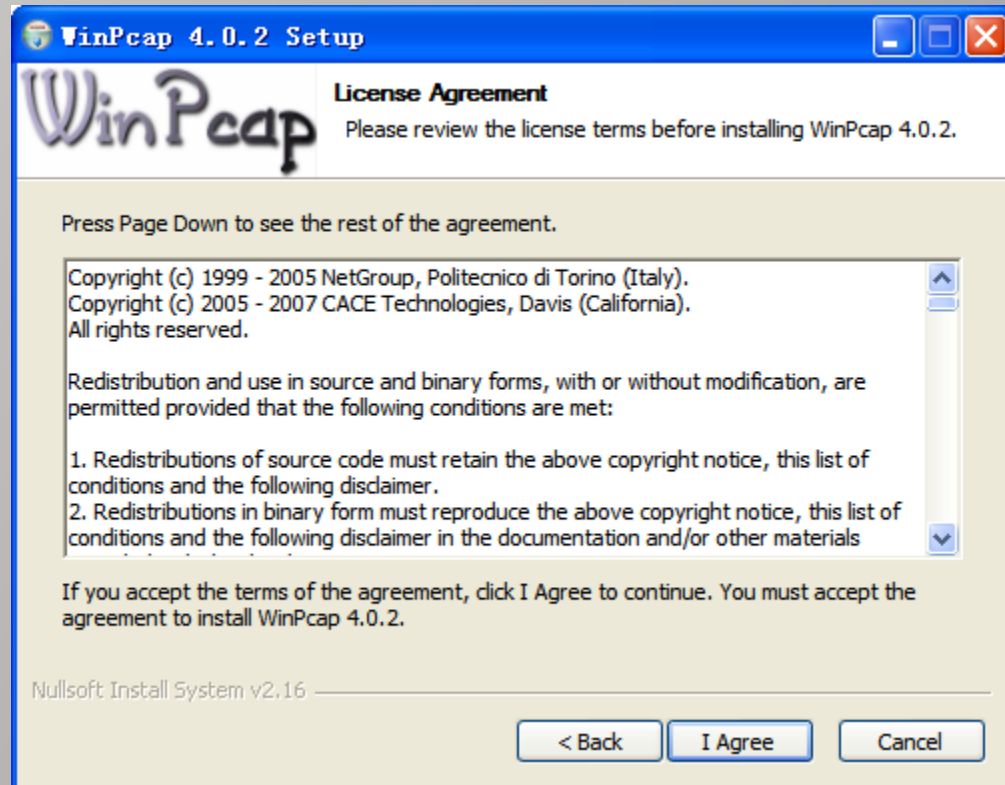
VCX32 OEMSetup Installation

VCX32 HDS Setup

Step5

Install WinPcap

Click **【I Agree】**





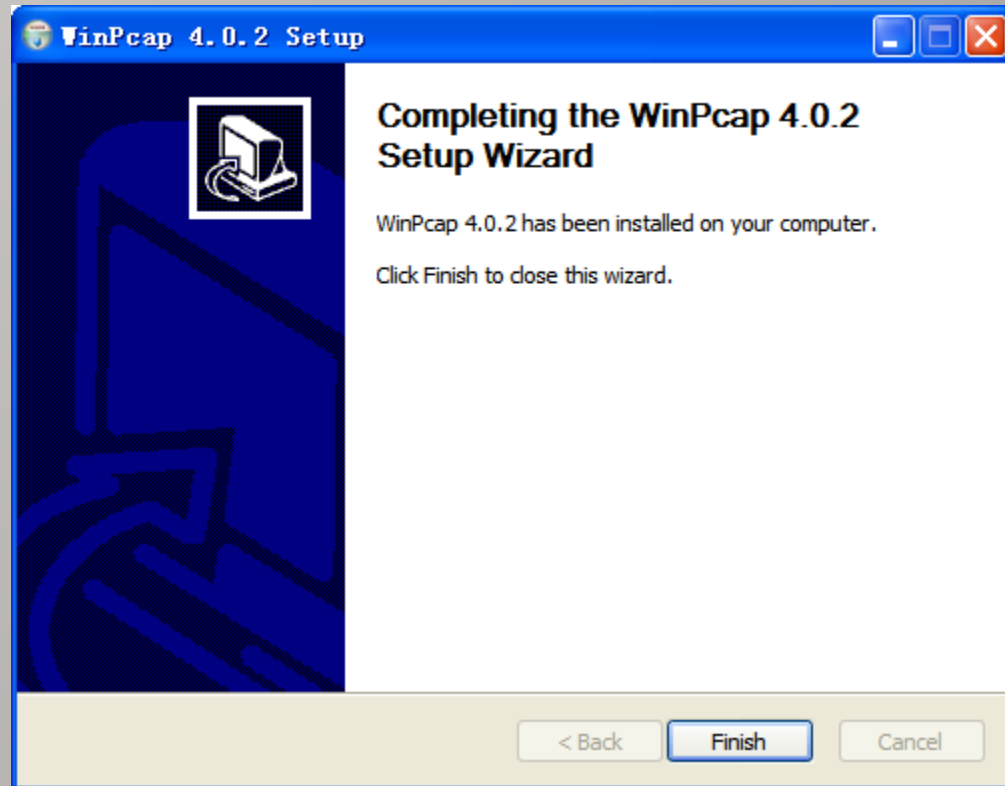
VCX32 OEMSetup Installation

VCX32 HDS Setup

Step6

WinPcap completed

Click **【Finish】**



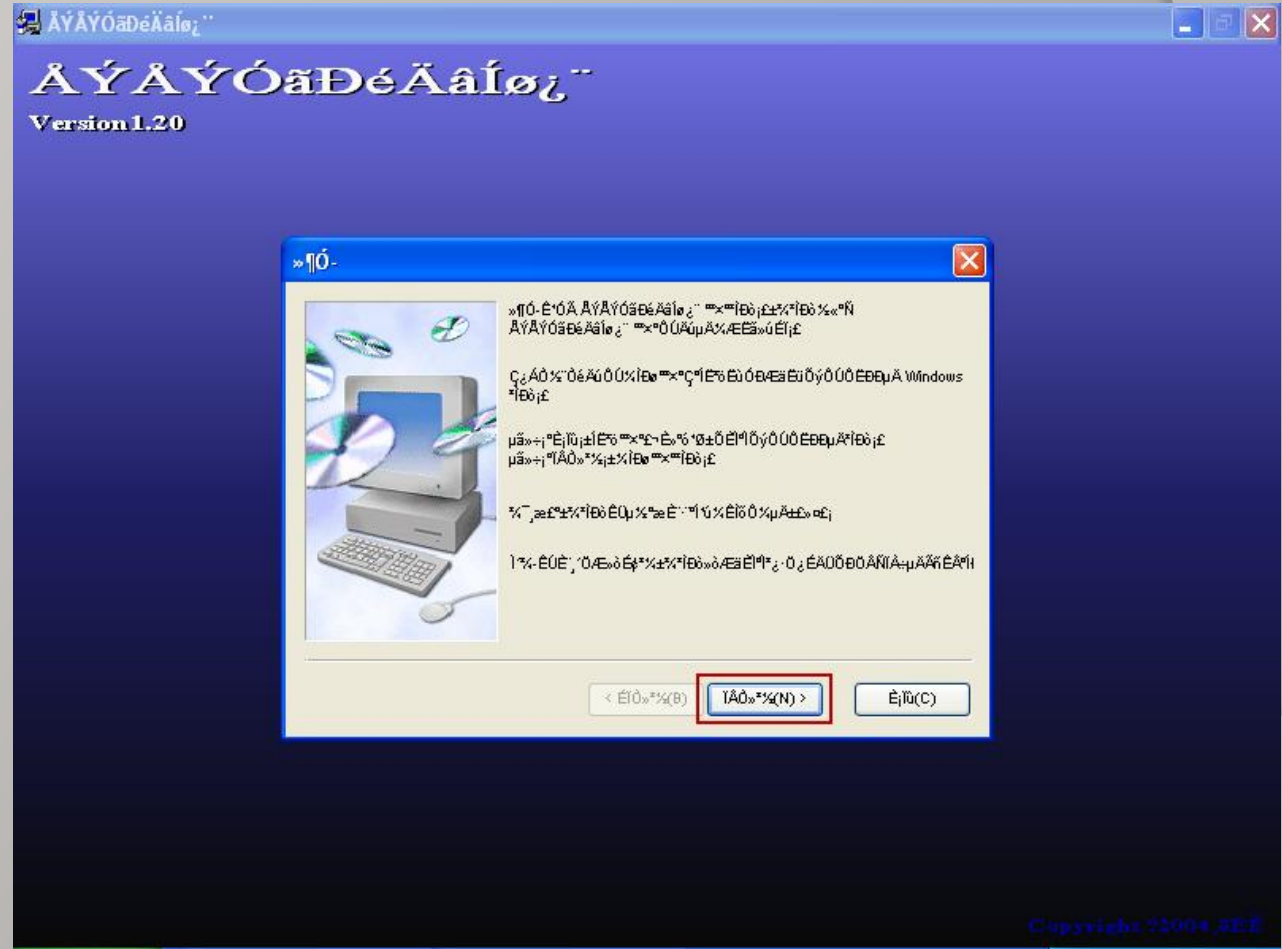


VCX32 OEMSetup Installation

VCX32 HDS Setup
Step7

Install Virtual Net

Click red-mark button





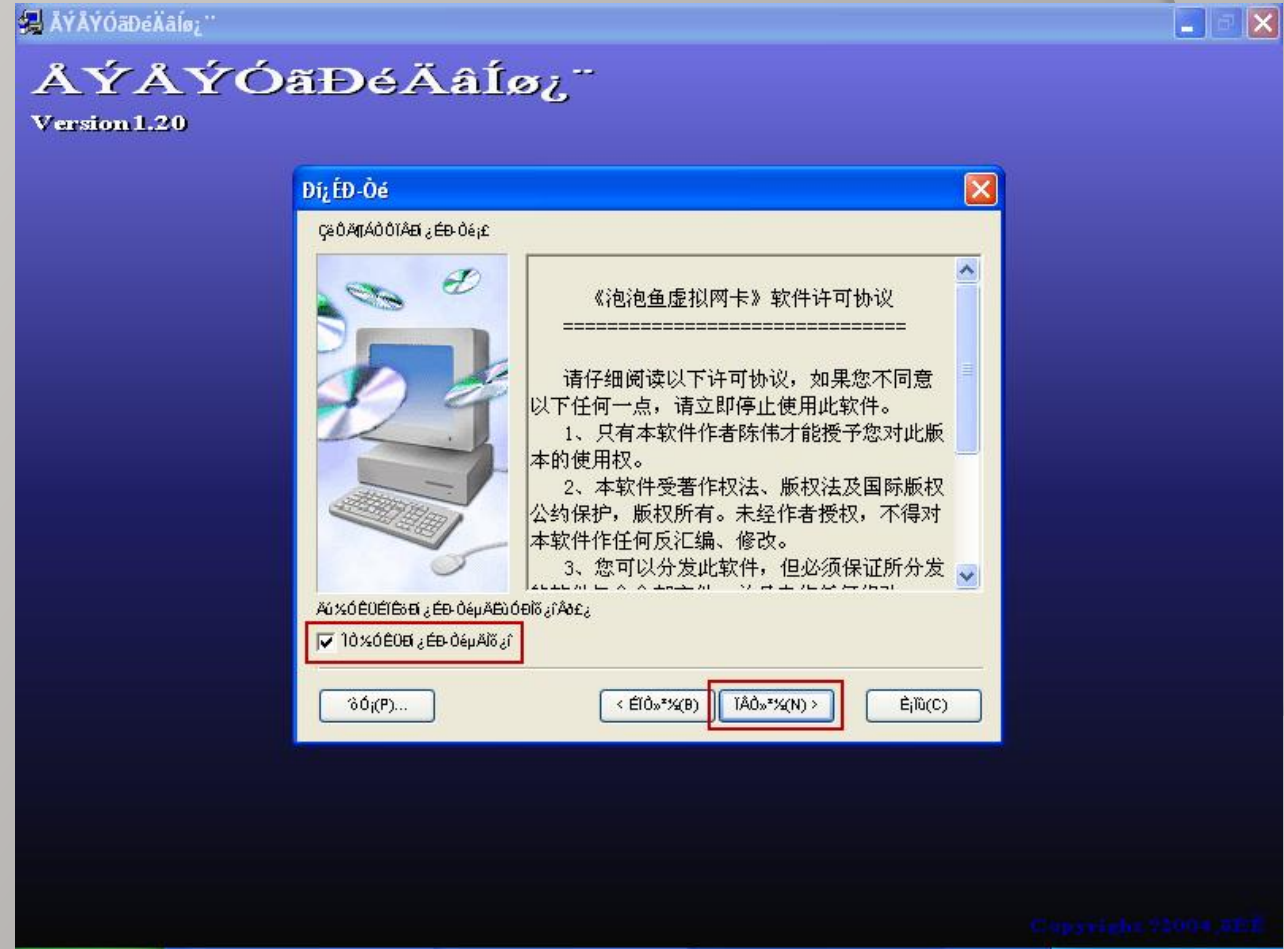
VCX32 OEMSetup Installation

VCX32 HDS Setup
Step8

Install Virtual Net

Check the red-mark
Checkbox.

Click red-mark button



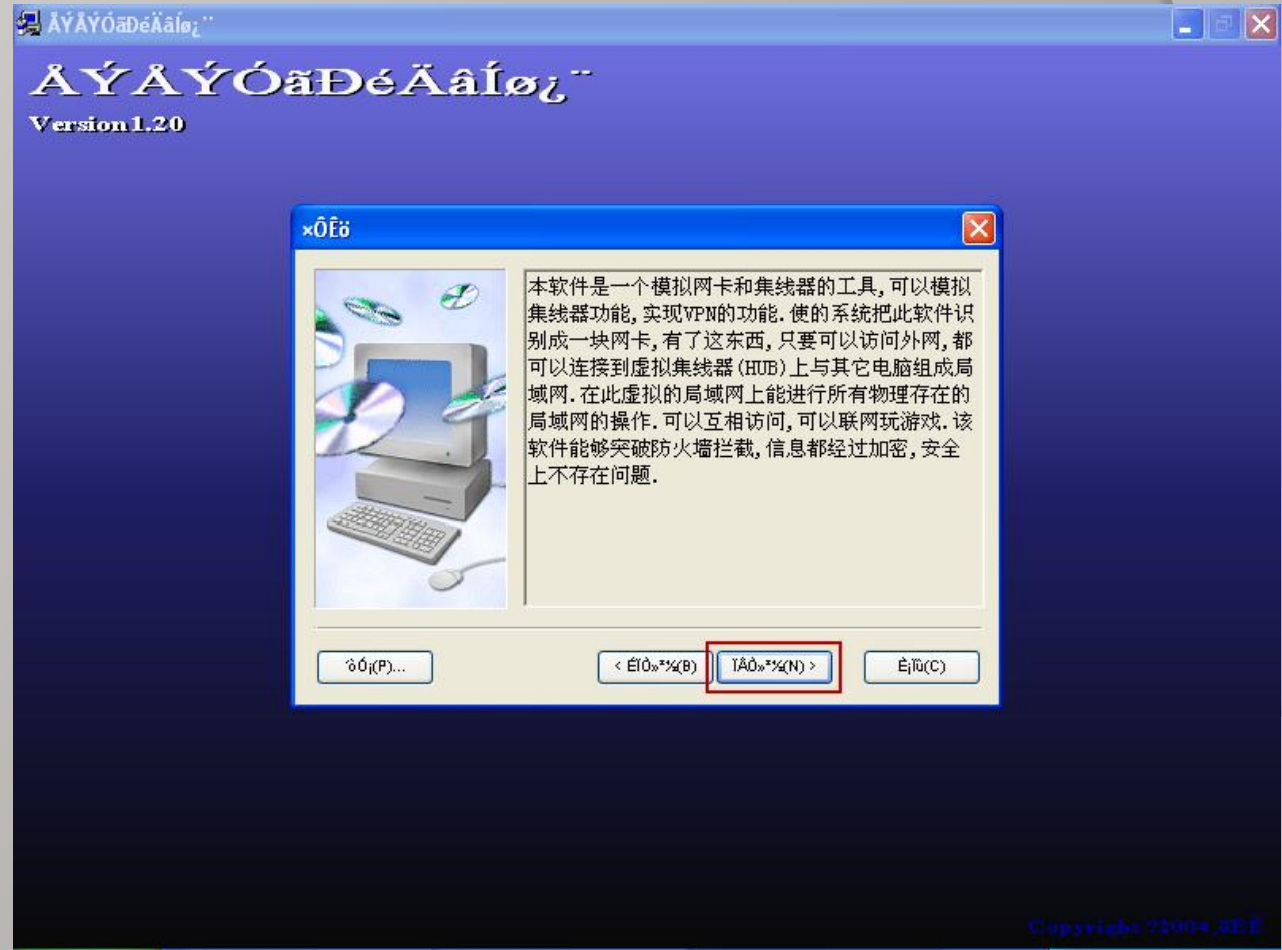


VCX32 OEMSetup Installation

VCX32 HDS Setup
Step9

Install Virtual Net

Click red-mark button



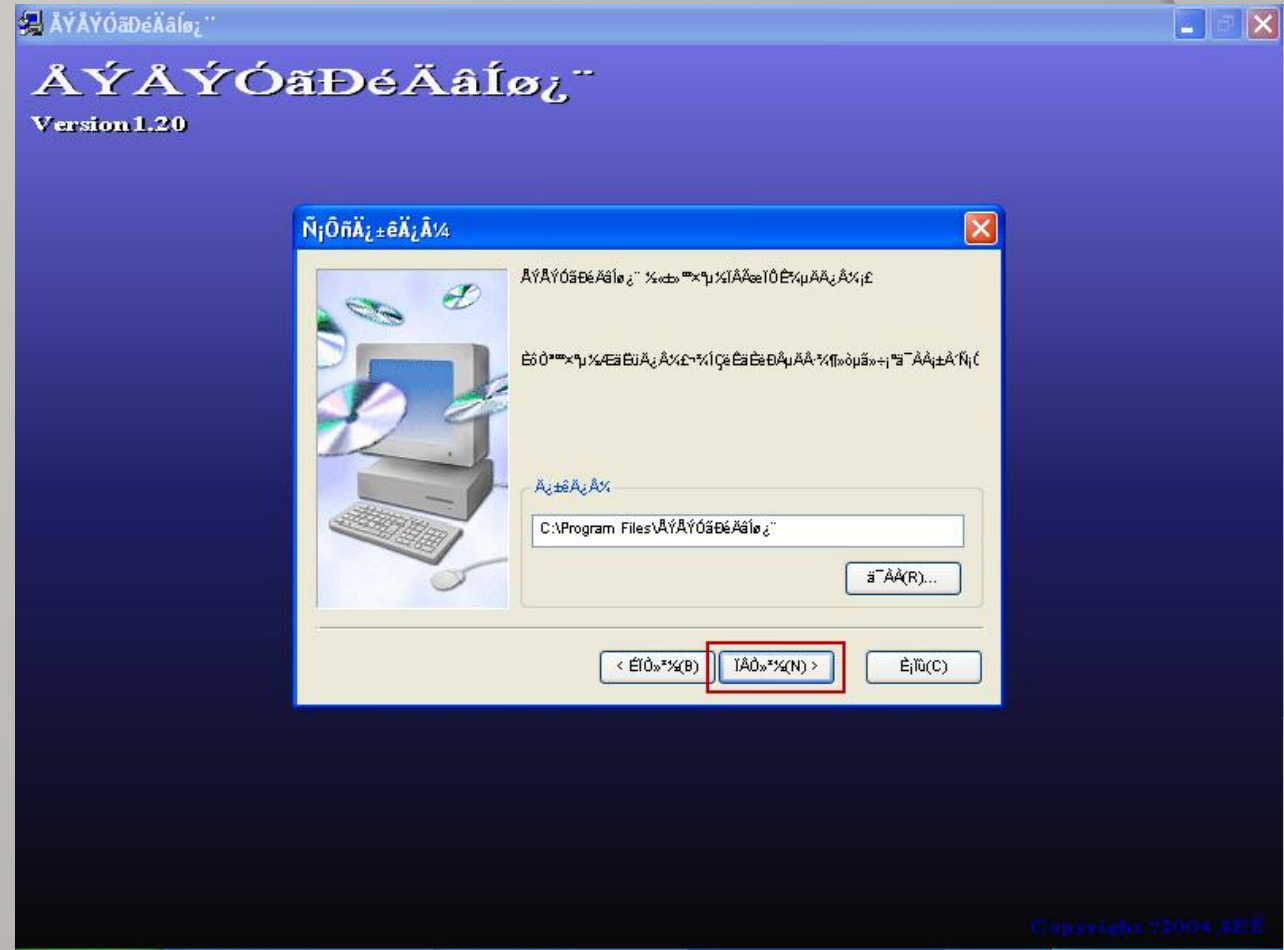


VCX32 OEMSetup Installation

VCX32 HDS Setup
Step10

Install Virtual Net

Click red-mark button



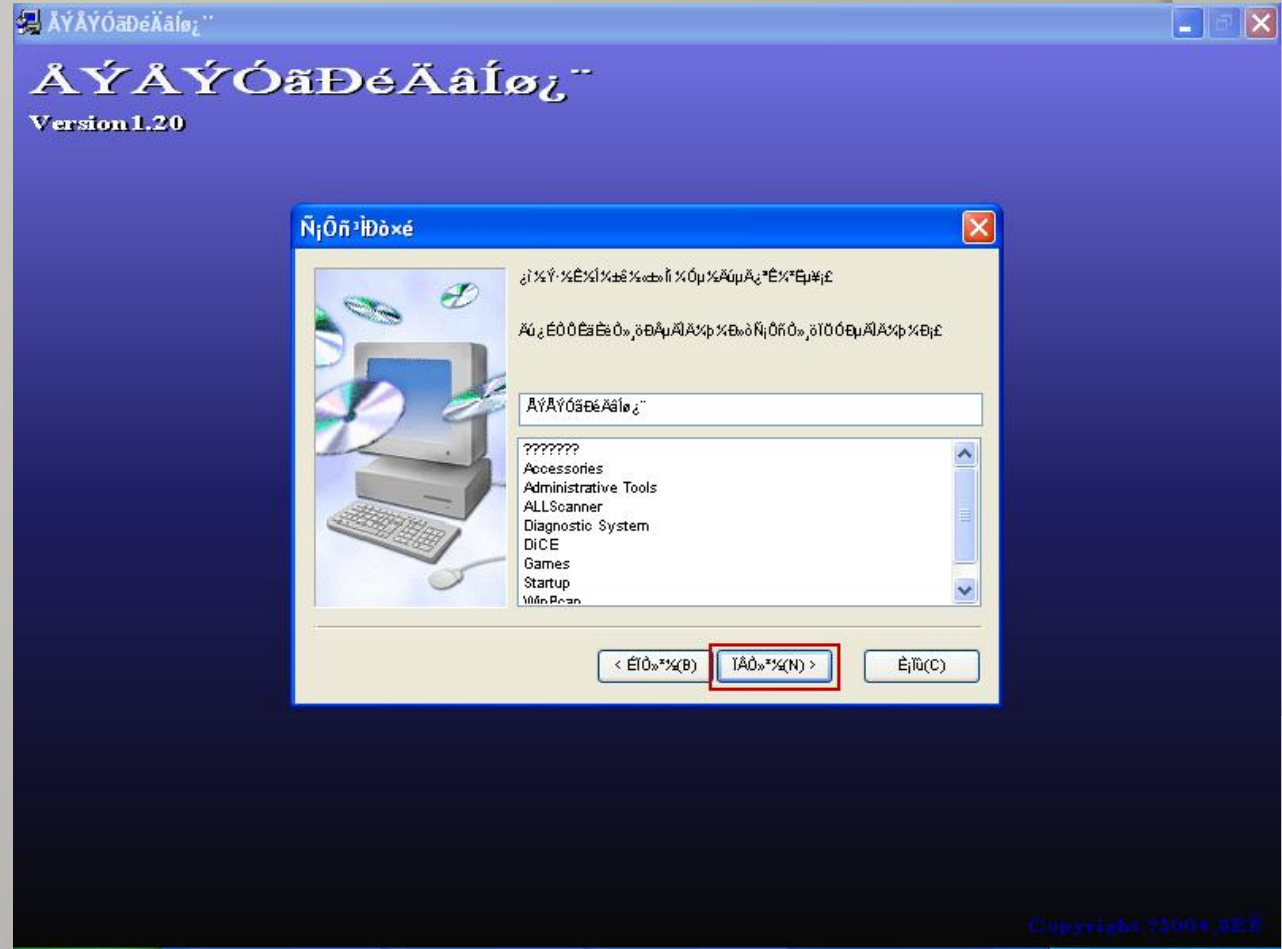


VCX32 OEMSetup Installation

VCX32 HDS Setup
Step11

Install Virtual Net

Click red-mark button



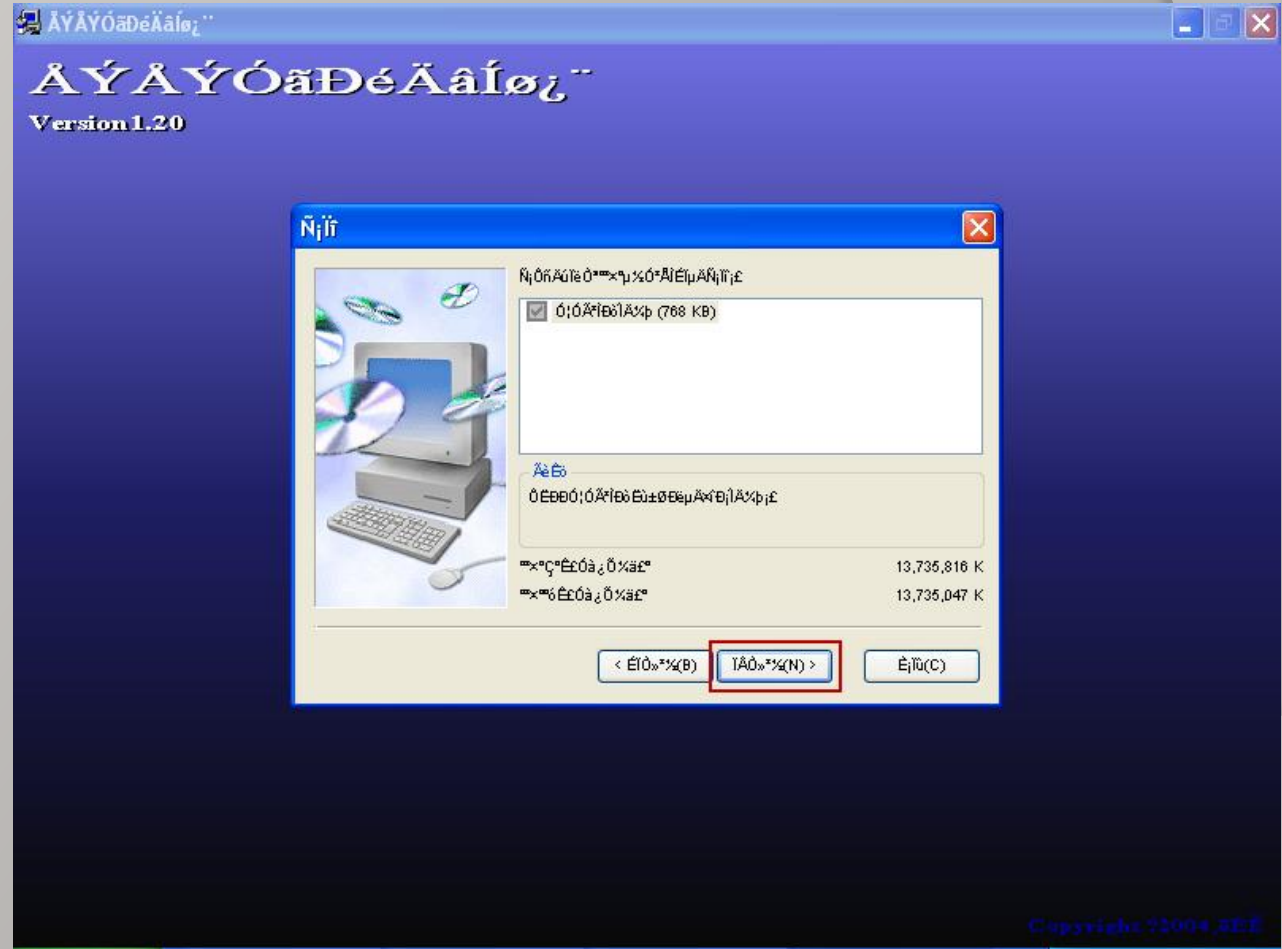


VCX32 OEMSetup Installation

VCX32 HDS Setup
Step12

Install Virtual Net

Click red-mark button



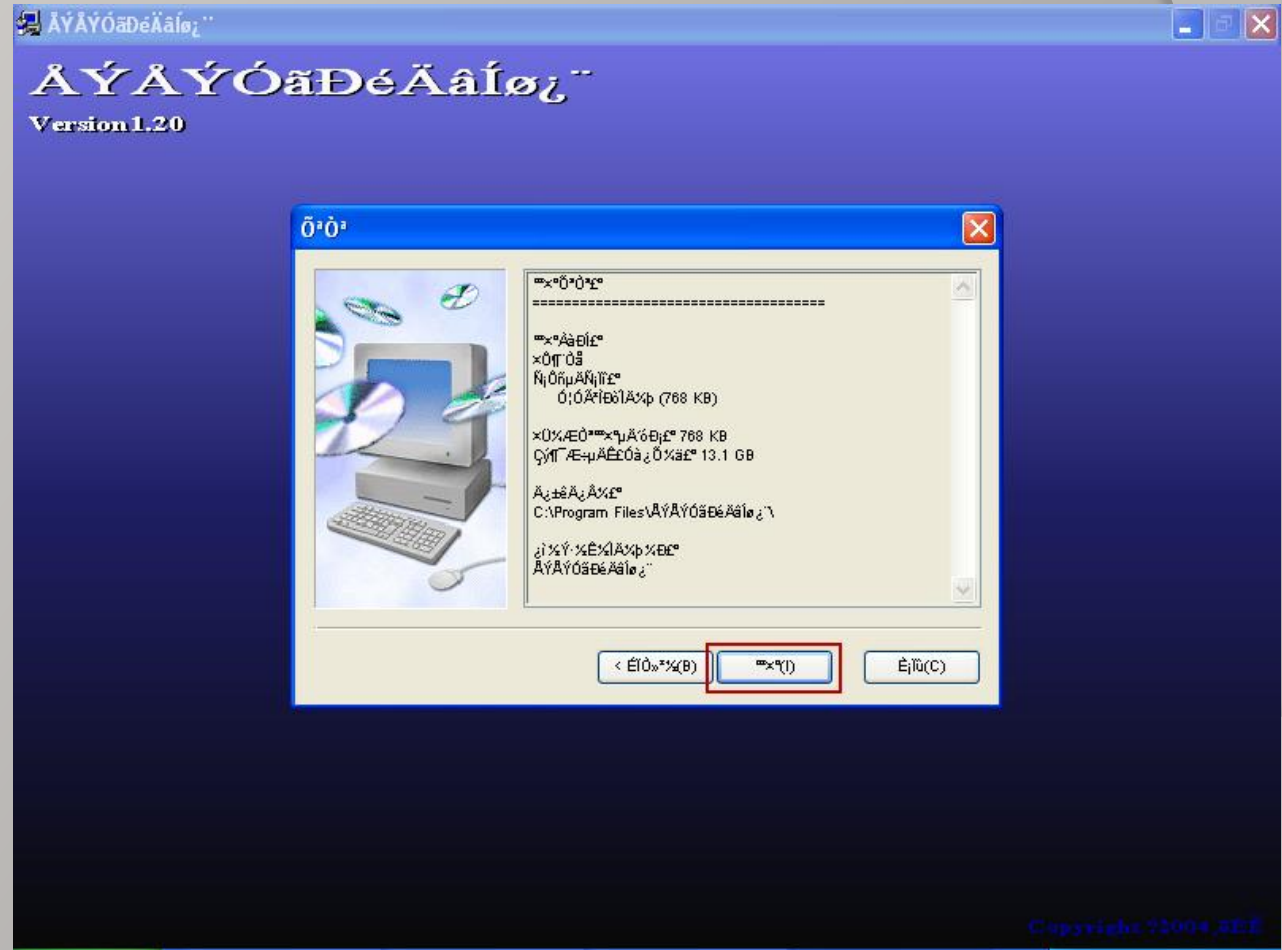


VCX32 OEMSetup Installation

VCX32 HDS Setup
Step13

Install Virtual Net

Click red-mark button



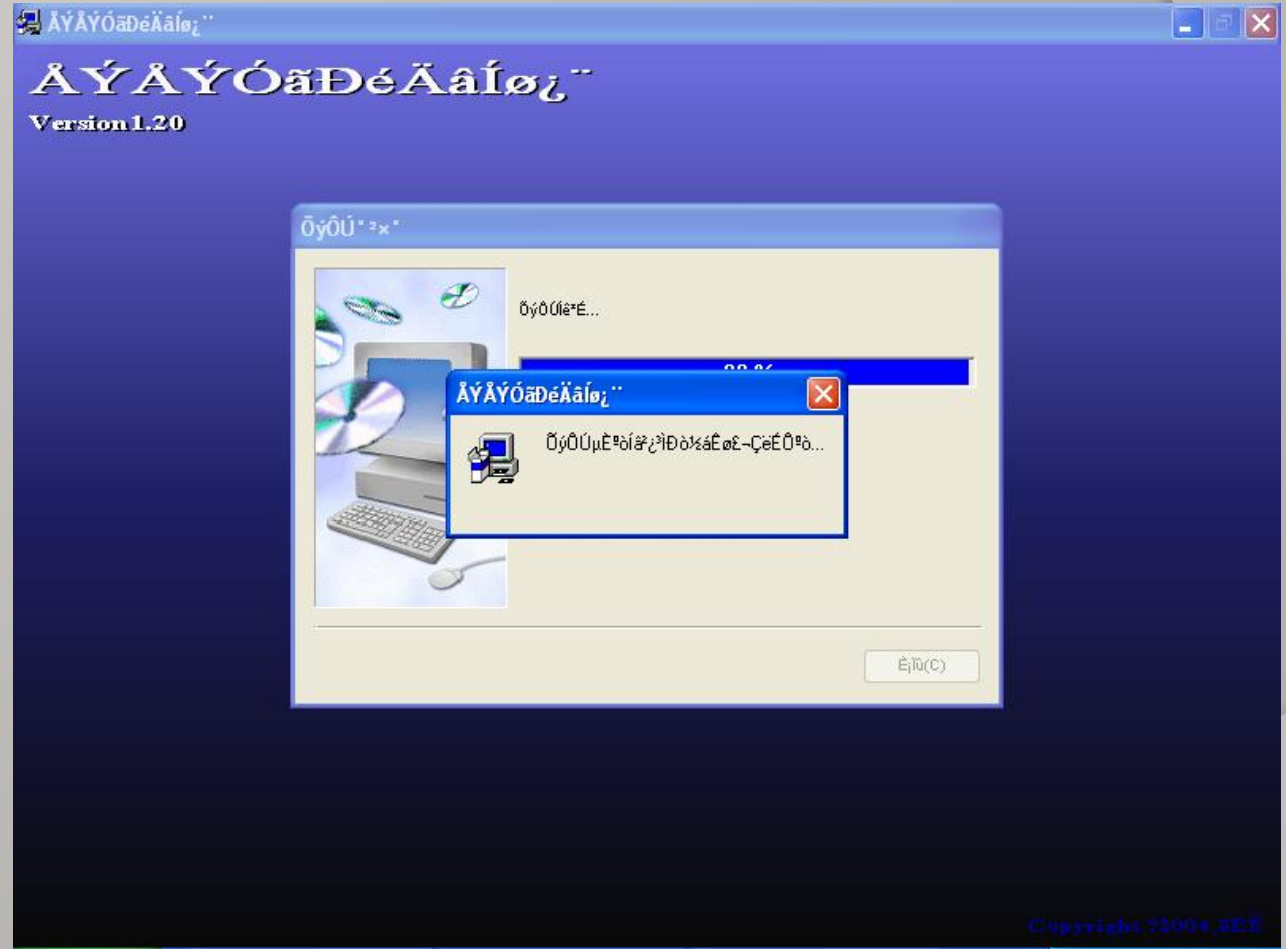
Copyright 2004, 2005



VCX32 OEMSetup Installation

VCX32 HDS Setup
Step14

Installing



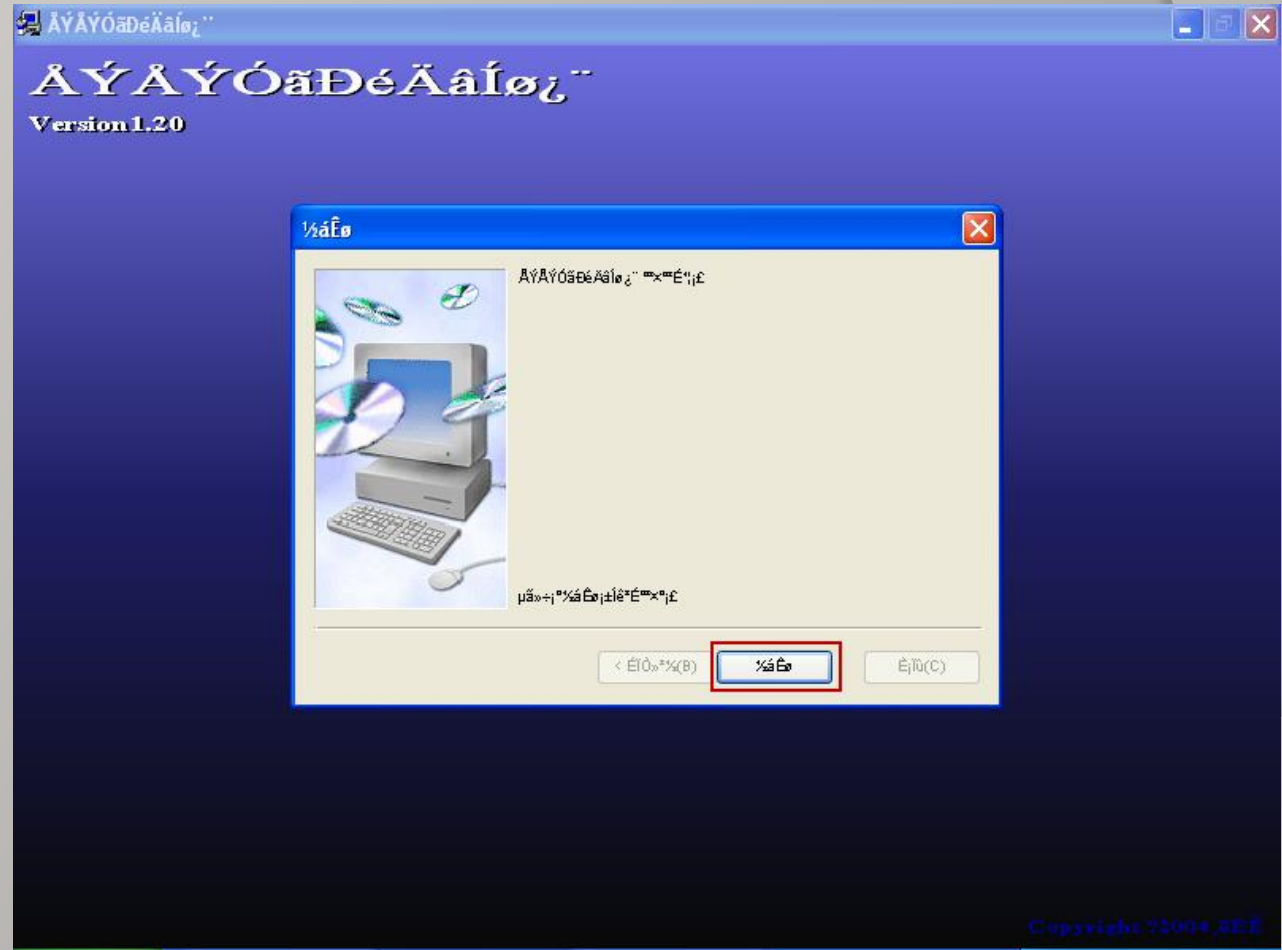


VCX32 OEMSetup Installation

VCX32 HDS Setup
Step15

Install completed.

Click red-mark button





VCX32 OEMSetup Installation

VCX32 HDS Setup

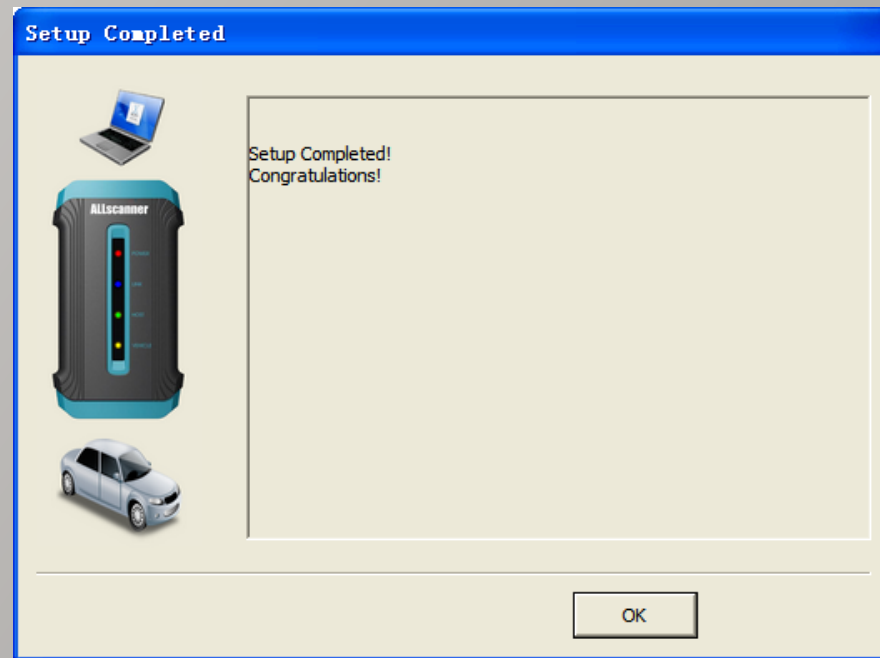
Step16

Finished.

Click **【OK】**

NOTICE:

Before to use HDS,
The computer must be
reboot.





Start Vehicle Diagnose

NOTICE:

Before to start diagnose,
The device must be
properly connected and
activated.

Reference

《VCX Quick Start》

Device Config tools

Connect | WiFi Configure | Firmware Update | Device Activate | About

Active Your Device

Device SN: **V99ZZ11118** Act **9294441161278773489**

C:\Documents and Settings\Administra .lsf

Send Device SN and Active Code to dealer ,Then you can get a license file !

Device: **V99ZZ11118**

Connect Status	Connected
Communication Type	USB
USB Port	COM3
Firmware Version	03.20
Activate Status	Not Activated



Start Vehicle Diagnose

TOYOTA TIS Usage

Find the shortcut on desktop



Double-click to run.

You need to input user information at first time.

Click **【OK】**

The screenshot shows the Techstream software interface. A dialog box titled "Techstream Configuration (S822-01)" is open, prompting the user to input information. The dialog is divided into "Required Information" and "Optional Information" sections.

Required Information:

- Dealer Name: 111
- Dealer Code: 111
- Dealer Phone: 111
- Dealer Country: United States
- User Type: US Dealer

Optional Information:

- Dealer Address: (Empty text box)
- Dealer Email: (Empty text box)
- Dealer Website: (Empty text box)

Buttons for "OK" and "Cancel" are visible at the bottom of the dialog. The background shows the Techstream main menu with options like "Connect to Vehicle", "Open Scan Data File", "Launch TIS", etc. The bottom of the window displays logos for TOYOTA, LEXUS, and SCION, along with the version number "Ver 4.21.002" and the user name "Default User".



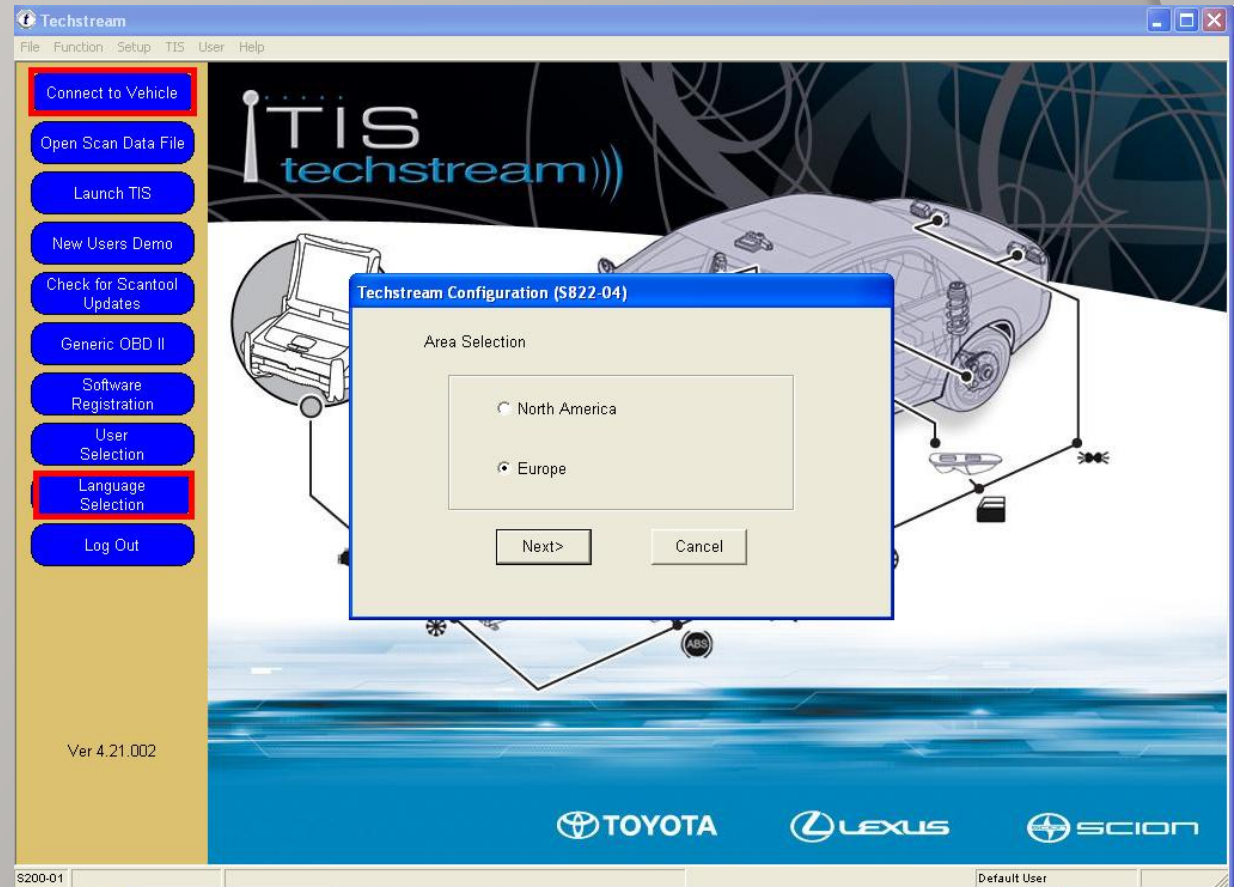
Start Vehicle Diagnose

TOYOTA TIS Usage

Change the TIS version
Between NS & EU:
Click the menu:
“Setup->Techstream
Configuration”

Select:
Click **【Language
Selection】** button

Diagnose:
Click **【Connect to
Vehicle】** button



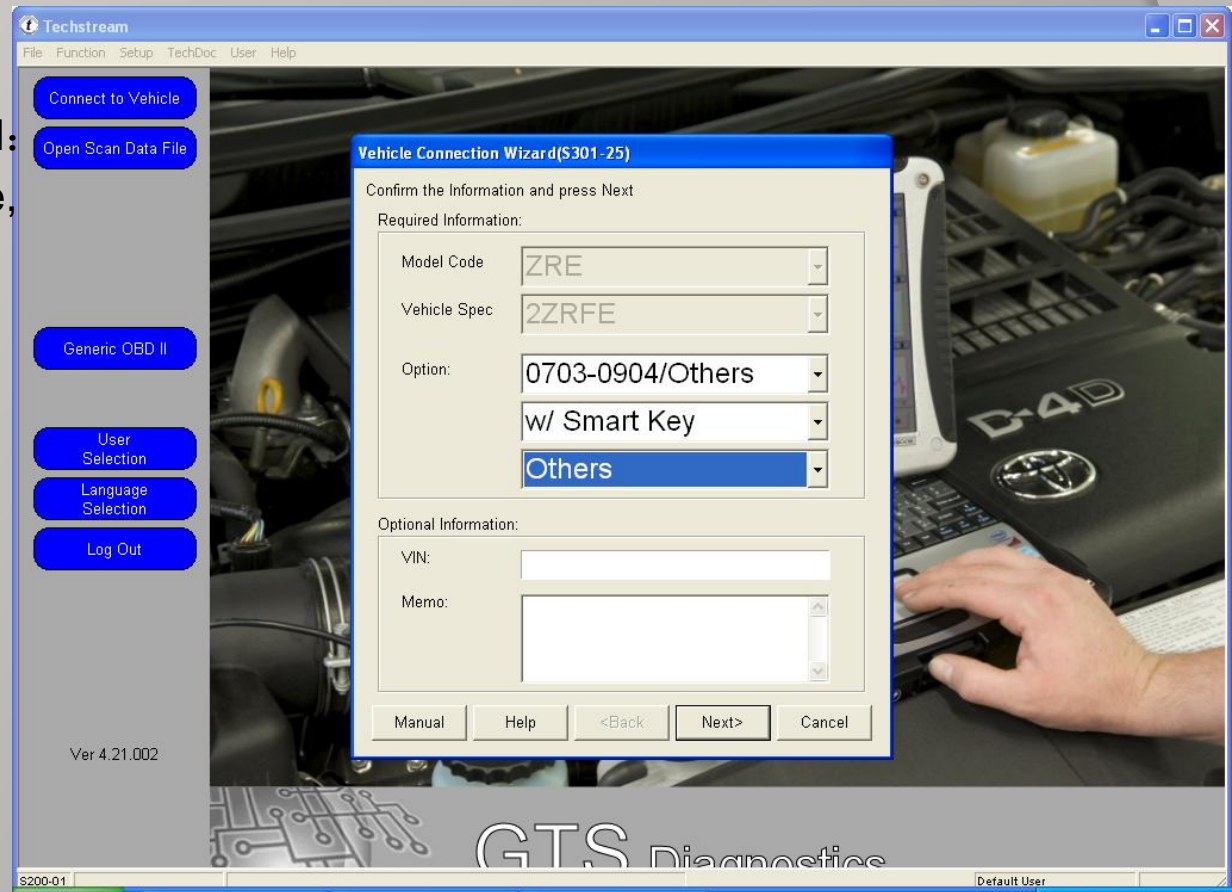


Start Vehicle Diagnose

TOYOTA TIS Usage

Vehicle Connection wizard:
After read the Model Code,
Select the Vehicle Option.

Click **【NEXT】** to start.





Start Vehicle Diagnose

HONDA HDS Usage

Find the shortcut on desktop



Double-click to run.

Setup Lang



Diagnose



Exit





Start Vehicle Diagnose

VIDA Usage

Find the shortcut on desktop



Double-click to run.

Input the Username:
Info-pc


Press ENTER
Or Click **【LOG IN】**

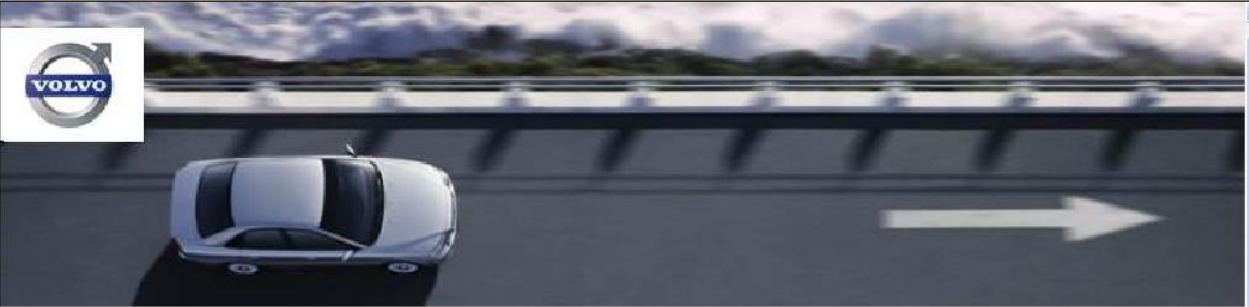
VIDA - Microsoft Internet Explorer

File Edit View Favorites Tools Help

Back Forward Stop Home Search Favorites Refresh Print Mail Stop

Address http://localhost/Vida/GetPublicationsList.do Go





VIDA
VEHICLE INFORMATION & DIAGNOSTICS FOR AFTERSALES

Username:

LOG IN

REGISTRATION GUIDE FOR SUBSCRIPTION

Problems with log in?
Please contact your local helpdesk

This machine is registered as VOLVO-BA2LMIK6H.
VIDA Version: VIDA2008C



Start Vehicle Diagnose

VOLVO VIDA Usage

In the **【Start】** page.
Click **【Perform
Computer
Settings】**

Click
**【Communication
Tool】**

Select **【DiCE】**

Select DiCE-003745

Click **【OK】**

The screenshot shows the VOLVO VIDA software interface in Microsoft Internet Explorer. The main window is titled "VIDA - VIDA2008C, en-GB - Microsoft Internet Explorer" and displays a navigation menu with buttons for "REPORT ERRORS", "HELP", "START", "VEHICLE PROFILE", "INFORMATION", "PARTS LIST", "DIAGNOSTICS", "SOFTWARE", and "SEARCH". The "START" button is highlighted with a red box. Below the menu, the text "VIDA - Vehicle Information & Diagnostics for Aftersales" is visible, along with instructions to "Define a vehicle profile to refine your search." and "Synchronize settings with the central system." The "PERFORM COMPUTER SETTINGS" button is also highlighted with a red box. A dialog box titled "Perform computer settings - Microsoft Internet Explorer" is open, showing the "COMMUNICATION TOOL" tab. The "DiCE" radio button is selected and highlighted with a red box, and the "DiCE-003745" dropdown menu is also highlighted with a red box. The "OK" button in the dialog box is highlighted with a red box. Other options in the dialog include "VCT2000" (selected), "COM1" (dropdown), "J2534", and "START PRODUCT CONFIGURATION". The "DICE UPDATE." section is also visible.



Start Vehicle Diagnose

VOLVO VIDA Usage

Click **【Vehicle Profile】** page.

Click **【Read Vehicle】**

After Read VIN,
Select the Vehicle
Options and Click
【OK】

Click **【Diagnostics】**
To start Diagnose

S60, 2001, B5204T5, AW55-50/51SN, L.H.D, YV1RS49K912081249, 081249, VIDA2008C, en-GB - Microsoft Internet Explorer

File Edit View Favorites Tools Help

Address http://localhost/Vida/vehicleProfileAction.do

REPORT ERRORS HELP Info-PC, INT LOG OUT

START **VEHICLE PROFILE** INFORMATION PARTS LIST **DIAGNOSTICS** SOFTWARE SEARCH

VEHICLE PROFILE CSC CSC LIST

VIN Chassis

YV1RS49K912 081249 **READ VEHICLE**

*Model *Year (*mandatory) Partner Group

S60 2001 INT, Arabia and China

Engine Transmission Steering Body style Special vehicles

B5204T5 AW55-50/51SN L.H.D 4DRS W/O S,R **OK**

CLEAR VEHICLE PROFILE

Latest identified vehicles

Model	Year	VIN	License plate
<input checked="" type="radio"/> S60	2001	YV1RS49K912081249	
<input type="radio"/> S60	2001	YV1RS49K912080961	

VEHICLE DETAILS