

ElsaWin INSTALLATION

Installing the Program:

Please scan through these installation instructions prior to trying the installation, please take each step carefully.

If at any time during the installation process you get an error message about missing programs, you will need to install these from the 'utilities' folder on the 'ElsaWin Setup CD'.

If you are using Windows VISTA, please turn on the feature 'Windows XP Compatible Mode' this feature allows you to install a program using XP. When selecting the option please make sure you also select the 'Administrator' tick box as well.

Before Installing:

Please remove from your PC any other versions of ElsaWin you have installed. To do this go to: 'My Computer' → 'Control Panel' → 'Add/Remove Programs' → ElsaWin


It is also required to delete the ElsaWin folder on your computers Hard Drive, to do this please go to: 'My Computer' → 'Local Disc (C:) hard drive' → ElsaWin (right click and select 'Delete')

Restart of PC is Now Required

Hard Drive: As part of the file exchange your Hard Drive needs to be formatted with 'NTFS' and not 'FAT32'. To check this go to 'My Computer', right click on your hard disk, scroll down to 'Properties' and in new window check 'File System: NTFS'

You must be logged into your PC as the Administrator with FULL access.

Setup

1. Explore the 'ElsaWin Setup' CD and open '**ElsaWin 3.0**' folder and double click the 'Setup.exe' (*not the Setup_2.exe file*): 
2. When prompted choose the language you wish set-up to proceed in and click 'OK'.
3. Click 'Next' on welcome installation wizard screen (if appears).
4. Select 'I Understand/Agree' with the safety reference and click 'Next'
5. **VERY IMPORTANT STEP:**
When prompted enter the name **johnnolan** following the exact instructions.
6. Click on 'Continue'
7. Choose installation path, usually default setting is ok. Please try and install in a main path. Such as *C:\ElsaWin*. Then Click on 'Next'
8. Choose by selection the Car Manufactures of DVD's you have a 'Data DVD' for.

9. Click on 'Next'
10. Click on 'Install'. (*allow system to install required files*)
11. Choose the language you wish the installation to continue in and click 'Next'.
12. When the new screen window opens click on 'Next'
13. Choose the top option in this window only.
14. Click on 'OK'
15. Choose the language you wish the installation to continue in and click 'Next'.
Please Note: German is selected by default, please deselect this if not required.
16. Then click on 'Next' to confirm selection.
17. **DO NOT** change the installation path in this window, just click on 'Next'
18. At this point is best to leave the information on this screen as it is, otherwise choose your program name and folder and click on 'Next'.
19. In the window displayed 'Start Copying Files...' click on 'Next'
20. Please Be Patient: *Some waiting time to take place*
21. If a window appears stating Registry Change, please click 'Allow'
22. When a new window opens 'Code enquiry' **DO NOT ENTER ANYTHING - close the window!**
23. Click on 'OK'
24. Click on 'Finish'
– **DO NOT** select 'Start ElsaWin;
25. If the setup at this point requires a restart, please do so.
26. From this same CD '*Setup CD*' open '**ElsaWin 3.0**' folder & this time click '**setup_2.exe**'
27. Choose the language you wish the installation to continue in and click 'OK'
28. Click 'Next' on welcome installation wizard screen (if appears).
29. You now have to install the *SVG-Viewer*, simply click the selected box and click OK.
30. Click on 'Finish'

DO NOT START LOADING DATA DVD's YET

1. Start the 'ElsaWin Administration' program from the desktop icon or start menu.

Start Menu:

Start → Programs → ElsaWin → ElsaWin Administrator

or

Desktop:



2. Enter the following information when requested and click 'OK':

USERNAME: admin

PASSWORD: admin

TO OPEN THE RELEASE:

3. In top menu select:
Services → Code → Code Request...
4. For 'Final Code' simple enter the 'Provisional Code' on screen in *reverse* and click 'OK'
5. If the Provisional Code in Reverse does not work at step 5 above, please email us your 'Provisional Code' along with your eBay User ID and simply request 'Final Code'
6. IF you receive an error message during this process, you probably have not started the '**setup_2.exe**' at **point 25**

USER CONFIGURATION:

A new user without the administrator rights has to be created for user access; otherwise problems may occur with workshop service plans.

7. In top menu select:
Service → User Setup...
8. Now enter the required details, please remember to make a note of the 'Username' you choose, then click 'Next' (*Chosen Username: _____*)
9. In the next window DO NOT choose administrator, just click on 'Next'.
10. Choose a password and click on 'Next' (*Chosen Password: _____*)
11. In the windows 'setup four' enter the following, for:
Importer: 123
Dealer: 12345
-TICK standard company
12. Click 'Next' . . . and in the next window click 'Next' again.
13. Click 'Create'
14. You can now close the ElsaWin administration Services window.

INSTALLATION OF ELSAWIN 3.4:

1. From this same CD '*Setup CD*' open '*ElsaWin 3.4*' Folder & double click '*setup.exe*'
2. Click on 'Next'
3. Choose the language you wish the installation to continue in and click 'Next'.
Please Note: German is selected by default.
4. Click on 'Next'
5. Choose the top option in this window (*Repair Operations List*)
6. Click on 'OK'
7. Choose the language you wish the installation to continue in and click 'Next'.
Please Note: German and your previous language are selected by default, please deselect 'German' if not required.
8. **DO NOT** change the installation path in this window, just click on 'Next'
9. Follow on screen instructions by clicking 'Next' in each new screen until setup bar appears, allow installation of files.
10. Click on 'OK'
11. If a window appears stating Registry Change, please click 'Allow'
12. Click on 'Finish'
– **DO NOT** select 'Start ElsaWin
13. Once complete the system may ask to Restart Computer, if it does please select:
'Yes. I want to restart my computer now', then click 'Finish.

UPGRADING TO ELSAWIN 3.61

1. From the same CD '*Setup CD*' open FODLER '*ElsaWin 3.5*' & double click '*setup.exe*'
2. Repeat Steps 2 → 12 from this page, *it is not necessary to restart..*
3. From the same CD '*Setup CD*' open FODLER '*ElsaWin 3.6*' double click '*setup.exe*'
4. Repeat Steps 2 → 12 from this page, *it is not necessary to restart..*
5. From the same CD '*Setup CD*' open FODLER '*ELSA 3.61*' double click '*setup.exe*'
6. Repeat Steps 2 → 12 from this page, *it is not necessary to restart..*

If at any time the above ElsaWin 3.61 upgrade installs do not complete, simply close the installation window and attempt the specific upgrade install again

7. Now you can remove '*Setup CD*' and insert '*Data DVD*'.

SKODA & SEAT

With the Data DVD inserted the program should autorun and display the 'Elsa Data Setup' screen, click 'OK' to automatically install data.

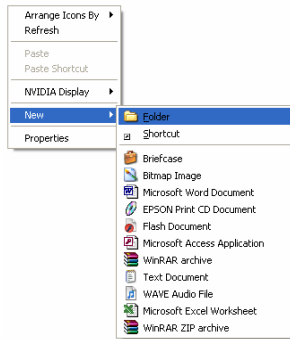
- If the autorun screen does not appear, explore DVD contents and double click 'setup.exe'

VW & AUDI

With Data DVD 1 inserted the program should autorun and display the 'Elsa Data Setup' screen, Click 'Cancel'.

1. Create a NEW folder on your PC Desktop and label it 'Data':

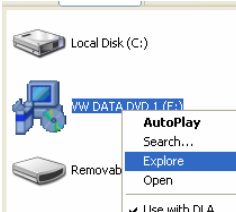
How? On your main start up screen (Desktop) click the right mouse button, then scroll to 'New' then select 'Folder' as below:



2. Now name the Folder 'Data' by simple typing when the folder text highlights in blue:



3. Explore the DVD contents by going to 'My Computer' → right click on the DVD drive 'VW Data DVD1' and select 'Explore' as below:



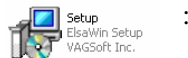
4. Select all the files by pressing the 'Ctrl' + 'A' button at the same time or selecting from the toolbar menu: **Edit → Select All**

5. Now Copy all the Files and Folders to the recently created 'Data' folder on your PC's desktop by selecting from the toolbar menu: **Edit → Copy To Folder...**

6. A new window will appear, click on the top icon word 'Desktop' and all folders will be shown that are on your desktop, now scroll to find the folder 'Data'.

Select the folder 'Data' so the text turns blue and click 'Copy'

7. Repeat steps 3 → 6 for all other Data DVD's, making sure all data is copied in to the same 'Data' folder on your desktop. Once complete open the 'Data' folder on the desktop and double click the 'Setup' icon



USING THE SYSTEM

1. Open the 'ElsaWin' program from the Start Menu or Desktop:
Start → Programs → ElsaWin → ElsaWin

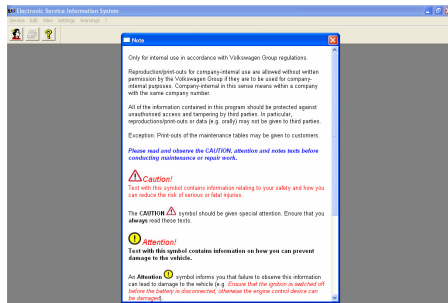


OR

Desktop Icon:



2. Now when prompted enter your username & password created earlier in the ElsaWin Administration System which you should have taken note of.
→ *If you can not login run 'ElsaWin Administration System' with:*
USERNAME: admin PASSWORD: admin
 double click your Username (which you created earlier), click on Password and Re-submit your password. If this fails create a 'New User Account' as before.
3. Once logged in the system screen will open with a page headed 'note':



YOU must scroll to the bottom of this page and click on the 'Ok' Button.

4. When the new window is displayed you will have a screen displaying all the features of the program. It is a case of using common sense for the system and entering your car details for most features.

HELPFUL HINTS

WORKSHOP MANUAL	most workshop related info
CURRENT FLOW	wiring diagrams
TECHNICAL SOLUTIONS	current solutions for common faults
MAINTENANCE TABLES	service sheets and schedules
STRICT MAINTENANCE	general operations
TECHNICAL SOLUTIONS	solutions to common faults & recall info

The upper icon buttons are also helpful too, with icons for “new process” and “view history” which is helpful for re-calling previous searches

TROUBLE SHOOTING

We will help all I can with any installation issues that you may have but most errors occur through not reading the install instructions correctly!

Problems? it will help us if you include vehicle make/model, chassis number and engine code when sending an enquiry or technical help issue.

PLEASE NOTE

Many people contact support stating the software will not work when in fact all they haven't done is opened the software correctly, after logging in with your username and password you are faced with a note from VW. Please use the scrollbar within the box and scroll down then press "ok", the software will then open up correctly

On this version of ElsaWin it is NOT POSSIBLE to connect direct to VW Servers to find exact vehicle details, this is a dealer only facility, D.I.S.S is also disabled too.

IMPORTANT!

When typing in vehicle details i.e. make / model / year / engine chassis press "OK" and not "Start Enquiry", this will stop the program attempting to connect to the internet

Vehicle Not Recognised:

Please try entering your car details without entering the VIN chassis details. Remember, all drop down lists marked with a red "*" are required,

Commercial Vehicles

For people who have purchased this software for commercial vehicles, the section you require is in the drop down menu "make", here you select "N - utility vehicles" instead of 'VW Volkswagen.....'

INSTALLATION ERRORS

Please uninstall the complete system in full.

To uninstall the complete system from your computer:

My Computer → Control Panel → Add/Remove Programs → ElsaWin

Once done locate you hard drive and delete the ElsaWin folder:

My Computer → Hard Drive (C:) → ElsaWom (DELETE FOLDER)

Please before installing remove adobe reader from your pc and install the adobe 5.05 on the setup CD located in the 'Utilities' Folder, then install the ElsaWin program. Once installed you can then upgrade to the newer version of adobe reader free at www.adobe.com

If you are using Windows VISTA, please turn on the feature 'Windows XP Compatible Mode' this feature allows you to install a program using XP. When selecting the option please make sure you also select the 'Administrator' tick box as well.

If the system gives you a provisional code, please make a note of it and send an email to us with the provisional code requesting the final code.

When you are then issued with a final code please use this at all times during installation even if the installation instructions state you not to enter anything, please enter the new Final Code issued.

Vehicle Identification

If during your vehicle selection process you cannot view details please send an email with as much of the below information as possible so we can check our system for details:

MAKE:

YEAR:

MODEL:

VARIANT:

ENGINE SIZE:

ENGINE CODE:

GEARBOX: