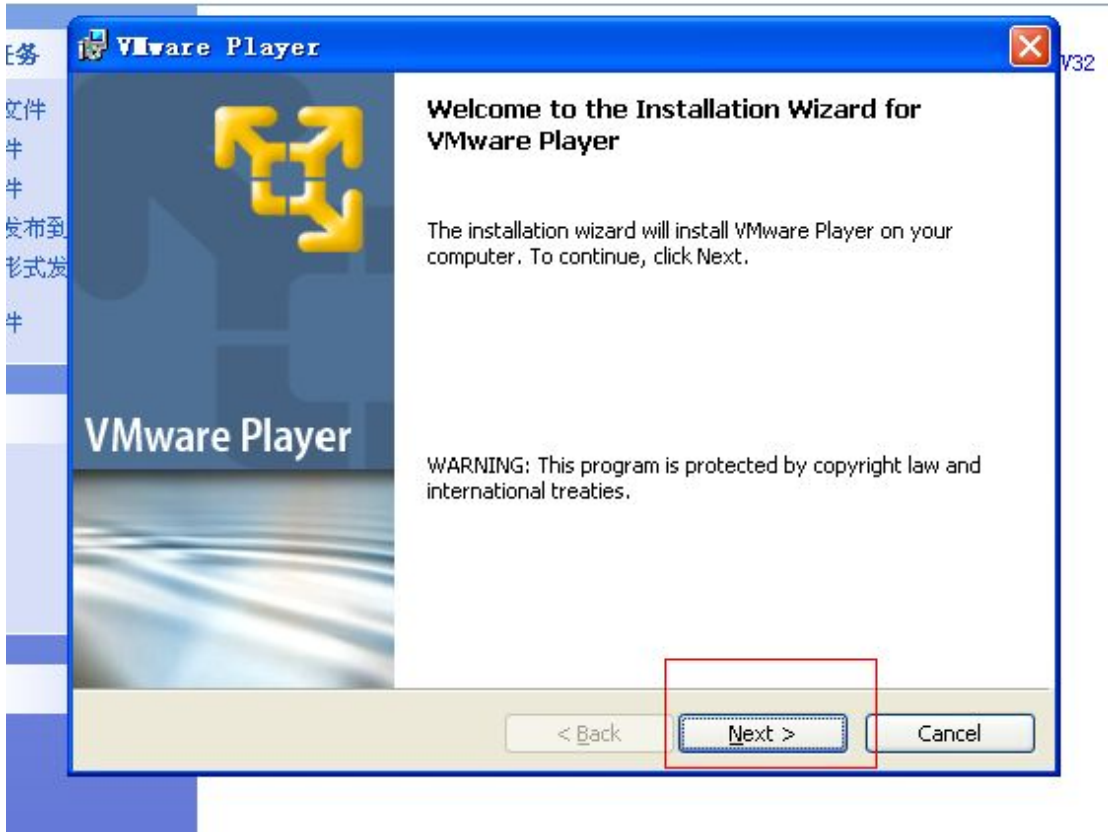
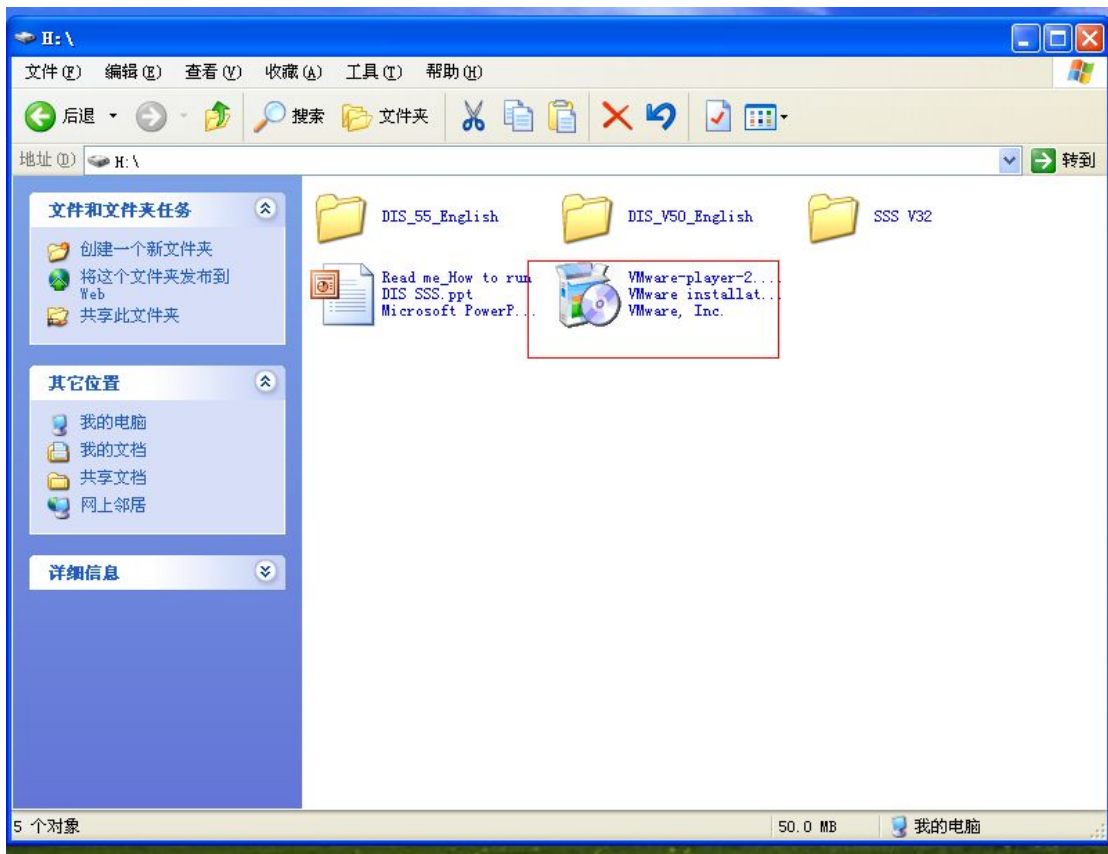


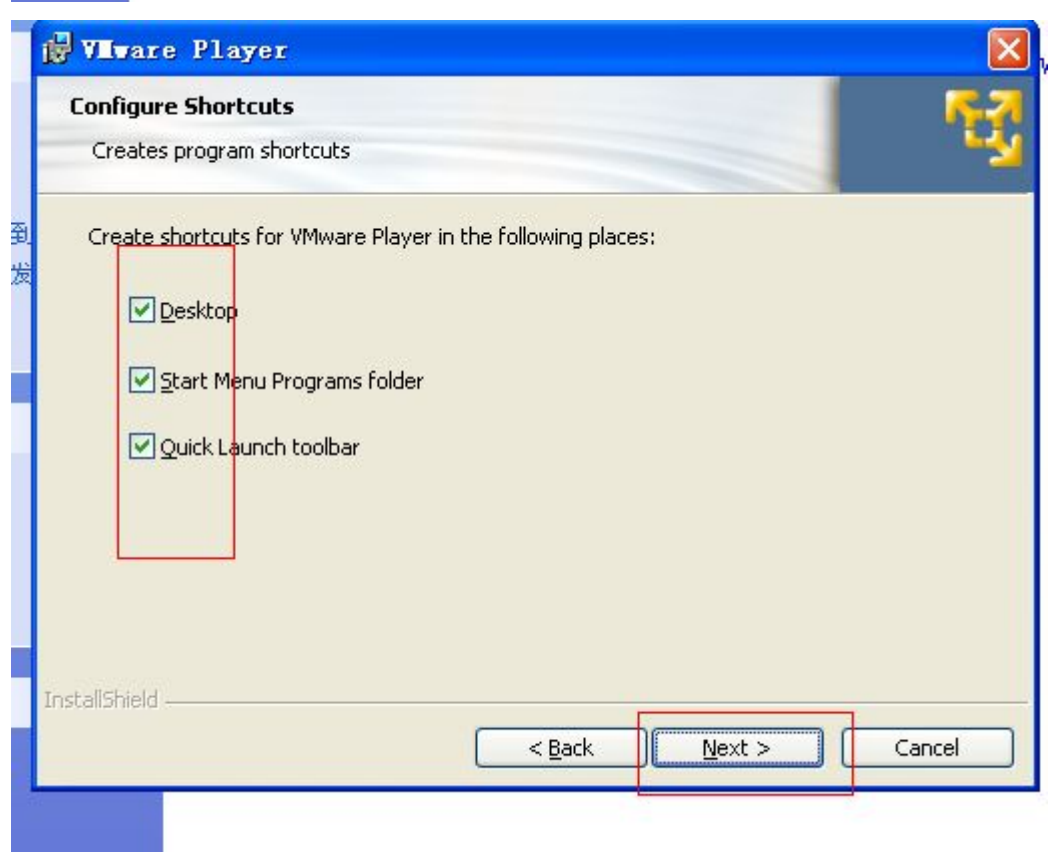
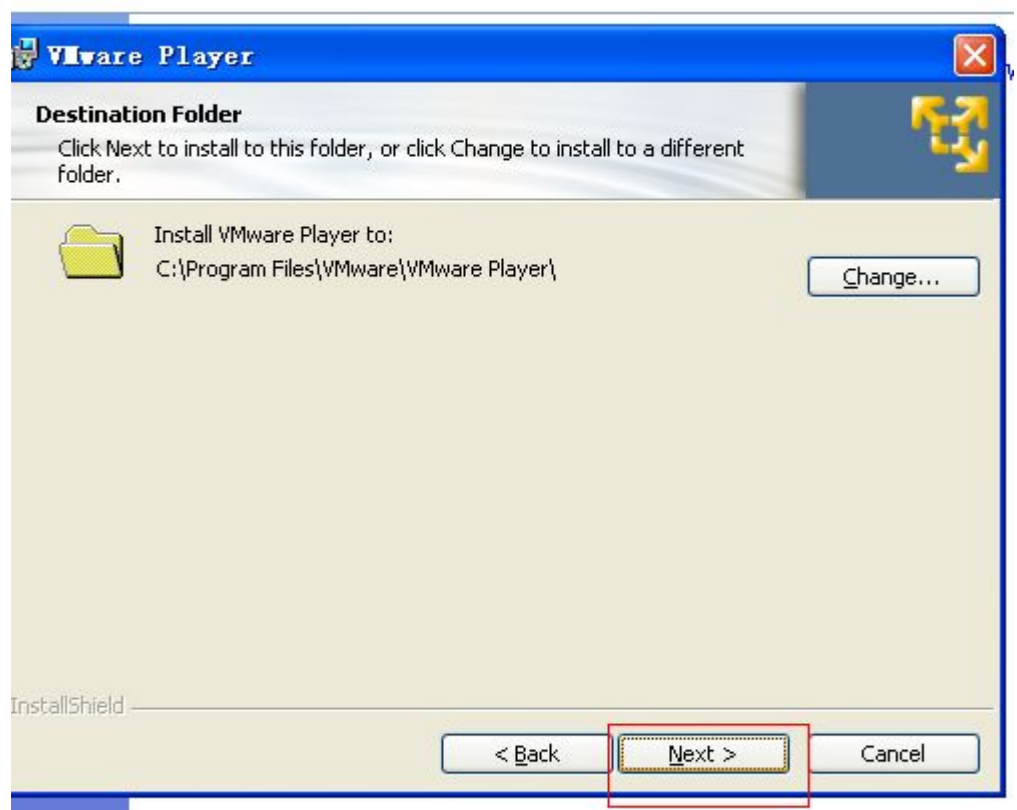
# BMW GT1 installation user manual

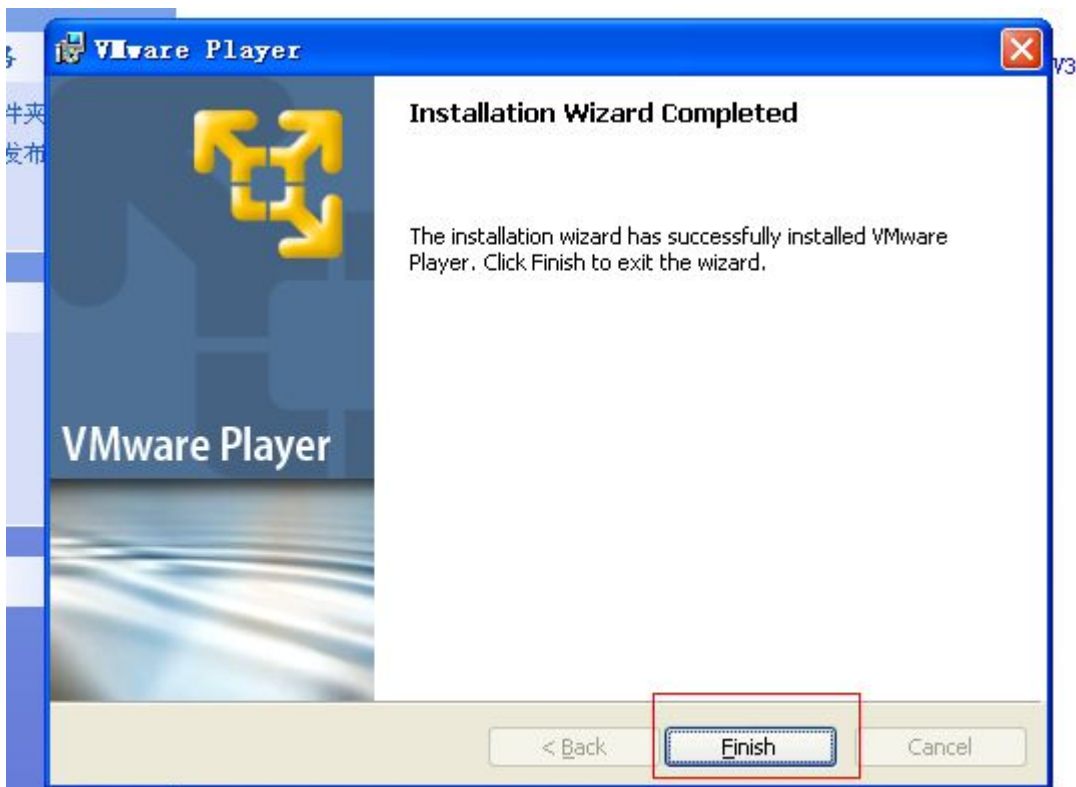
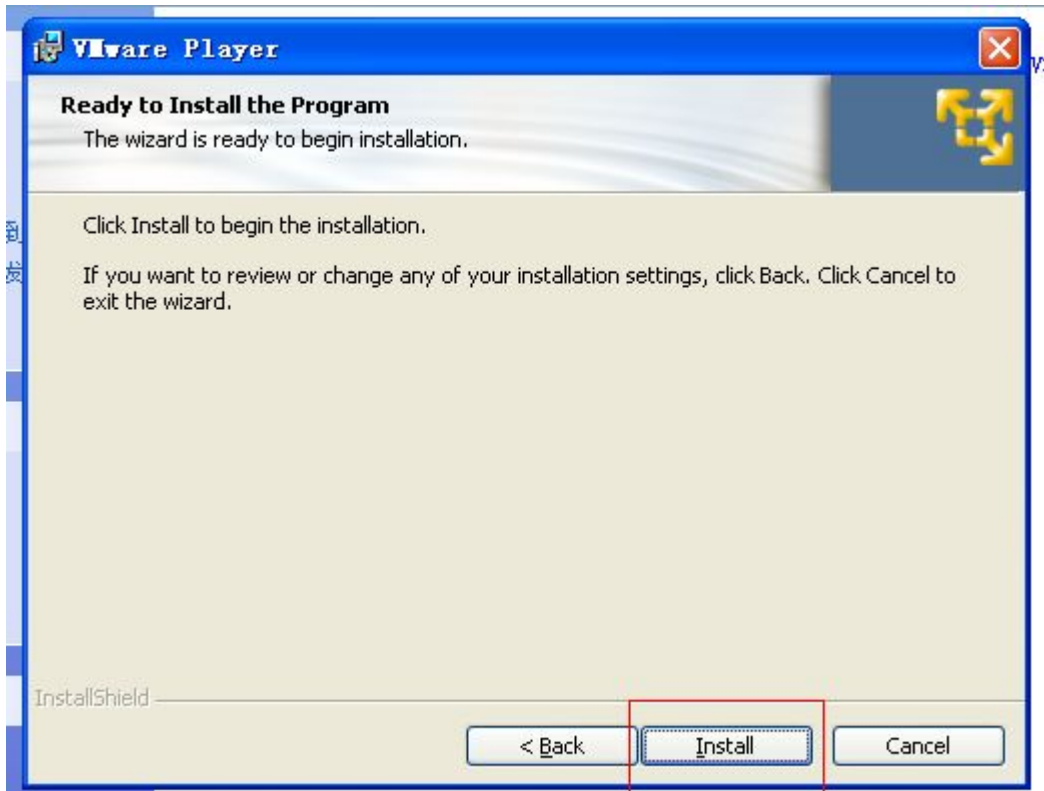


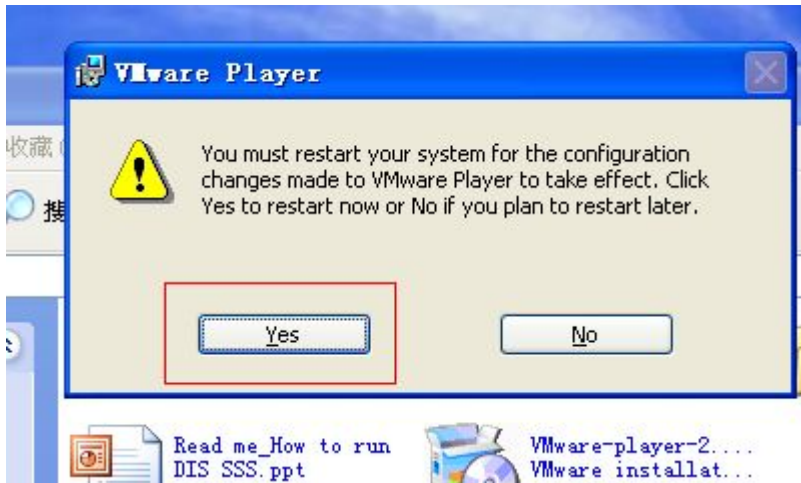
1. Open the bmw gt1 dis sss software HDD

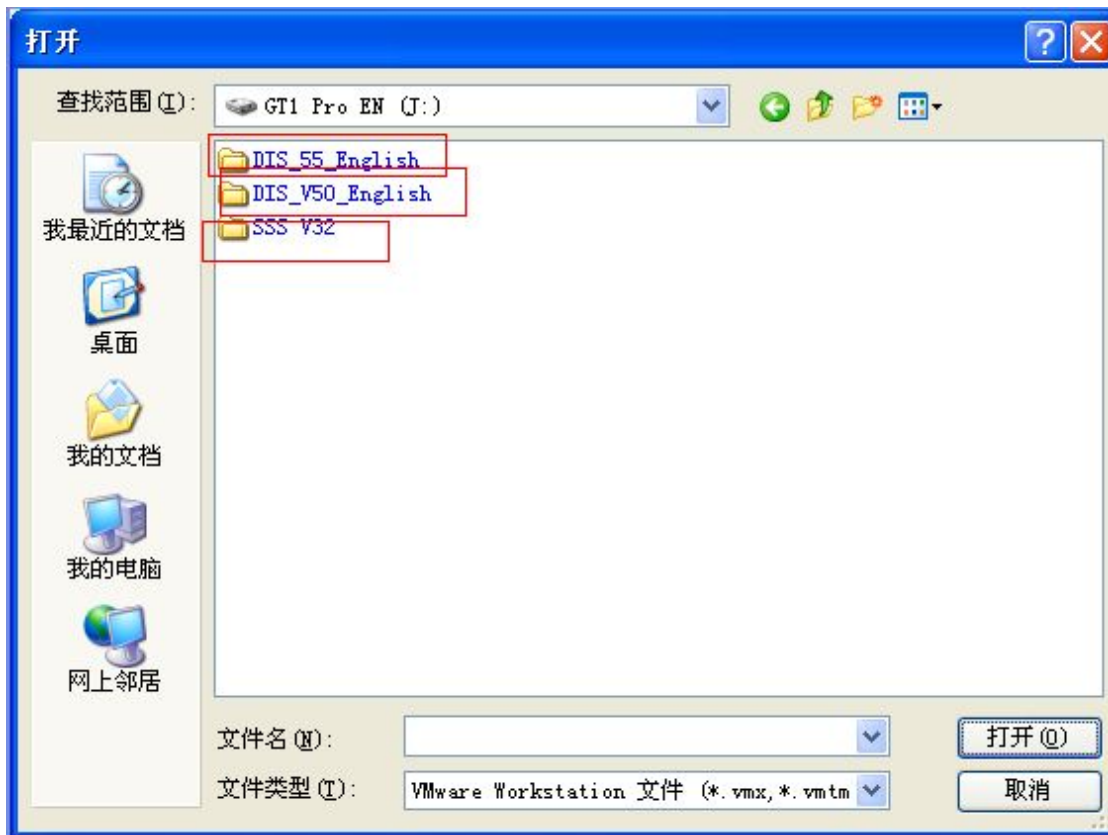
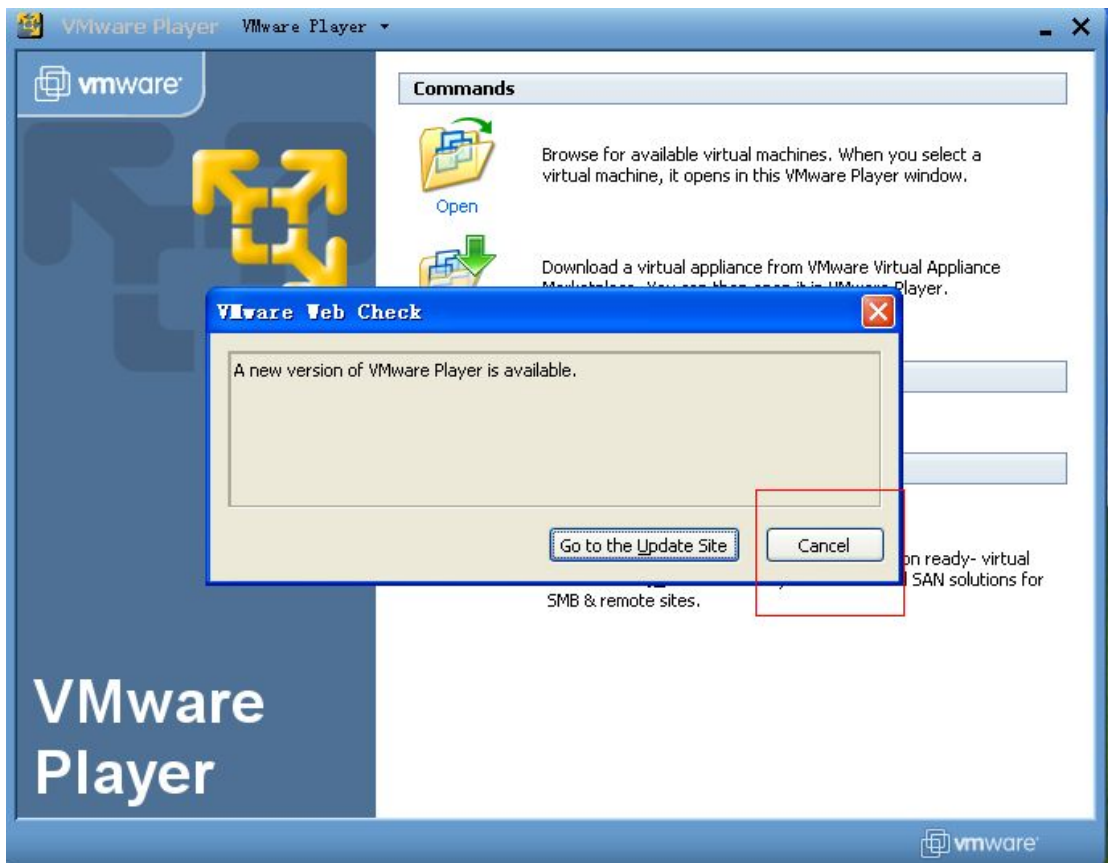




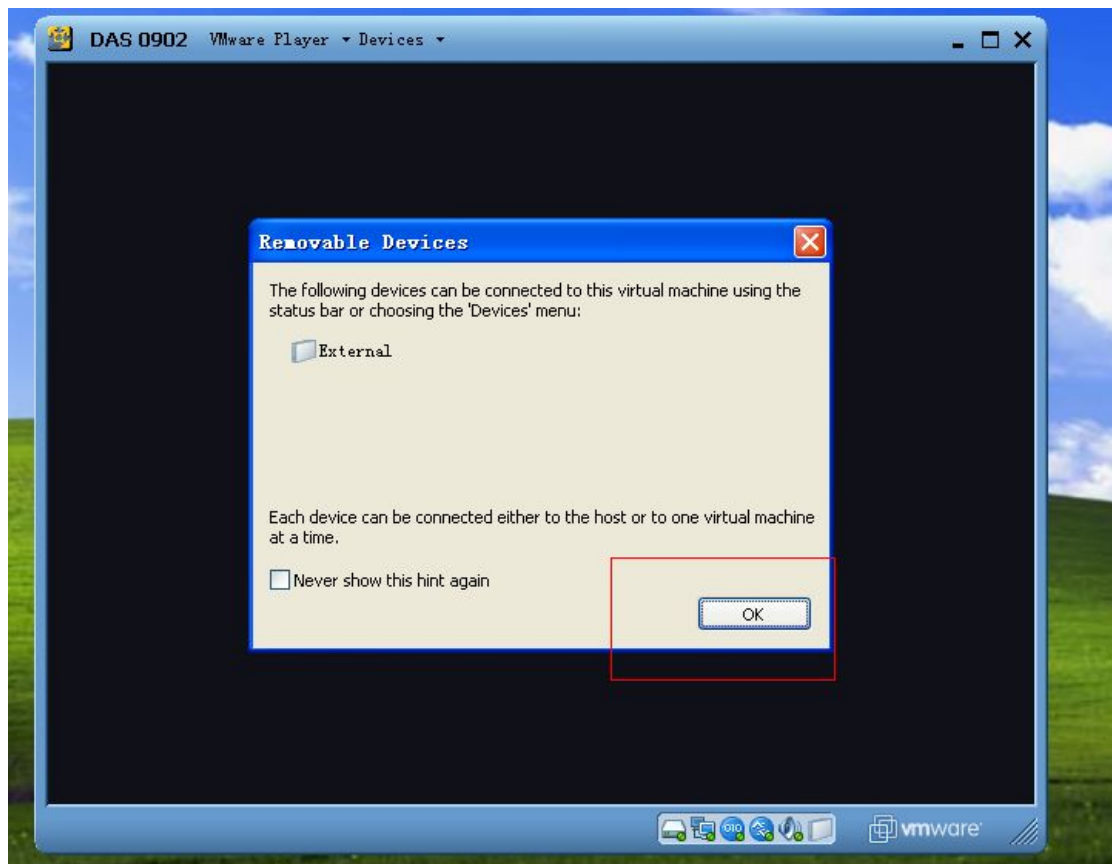
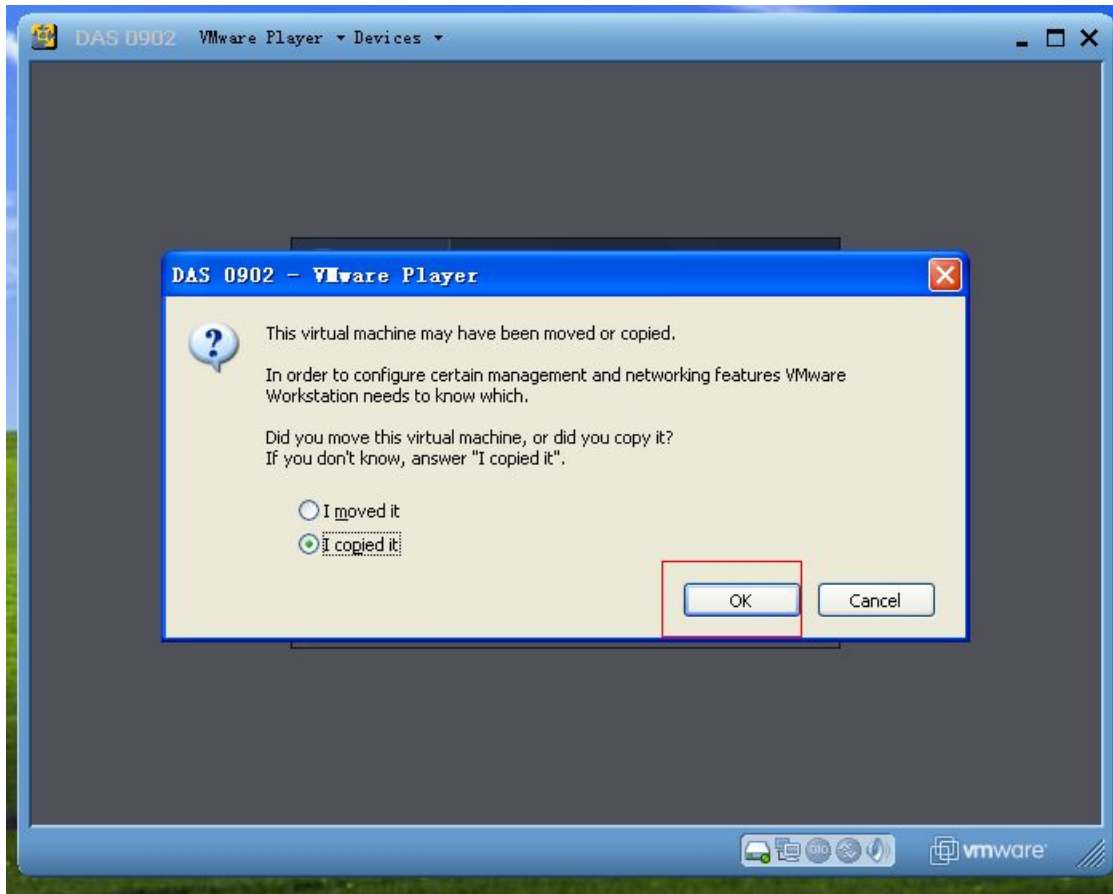




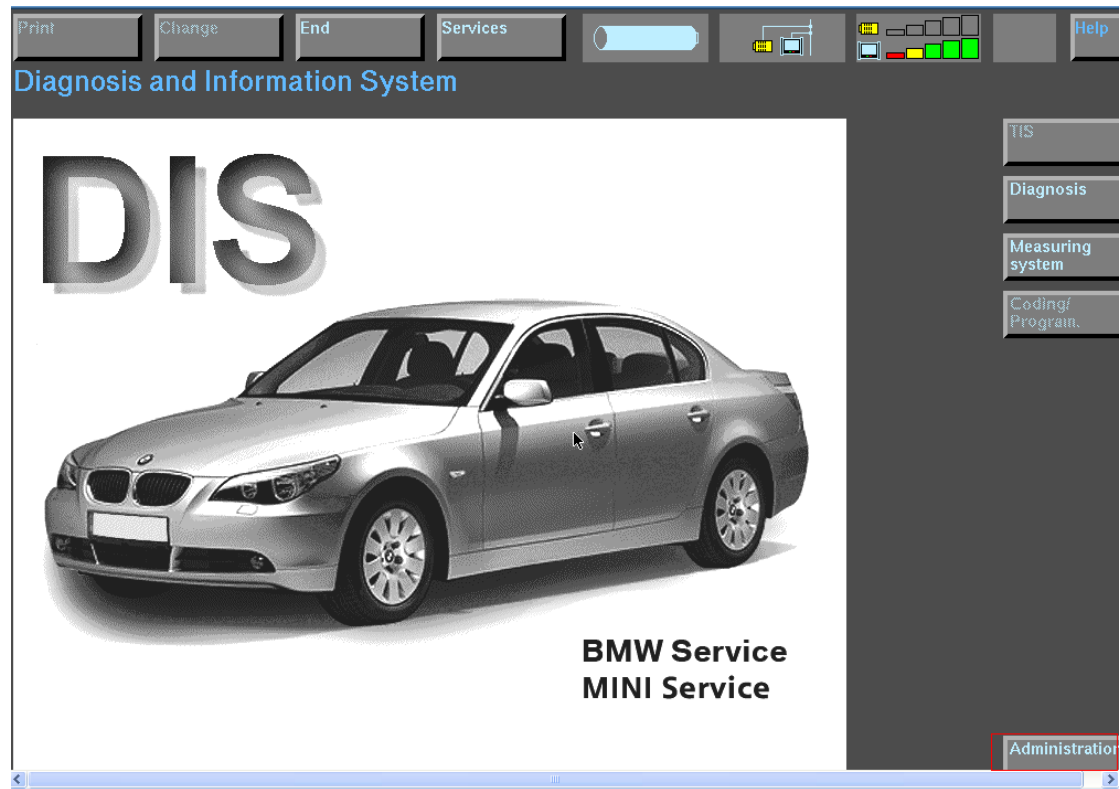




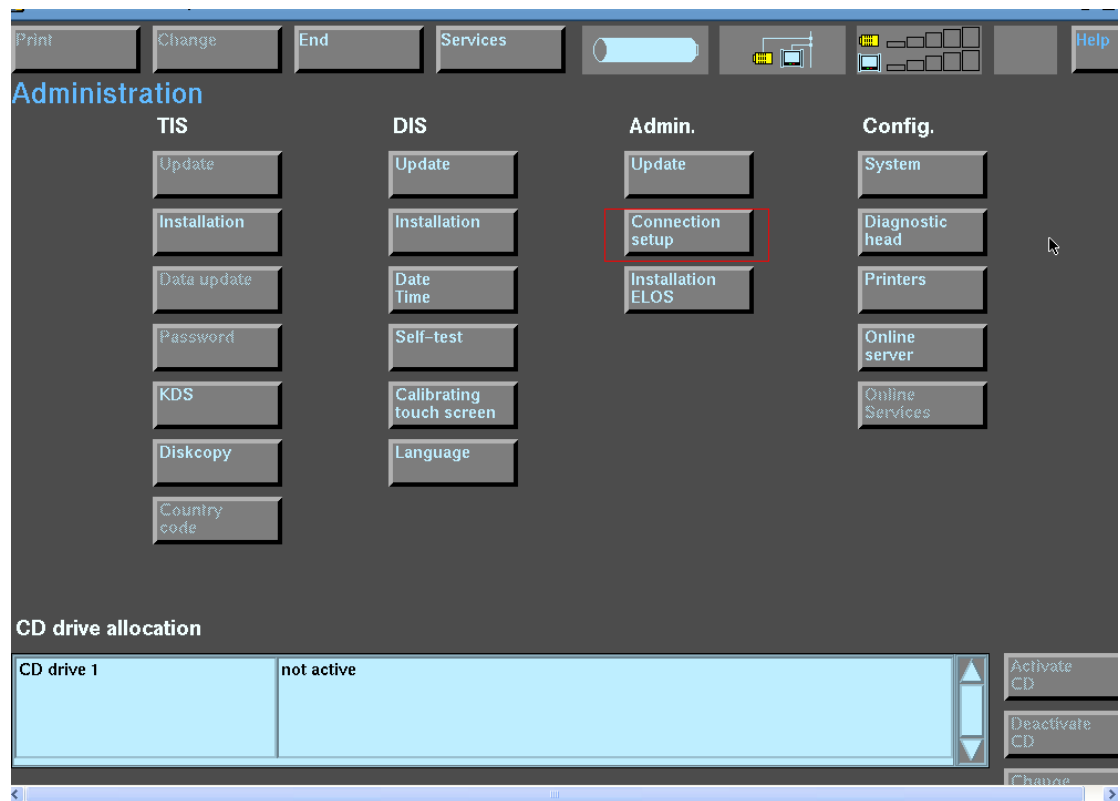




2 如果开机一直等待到这个画面就是进入了诊断系统点击进入程序管理

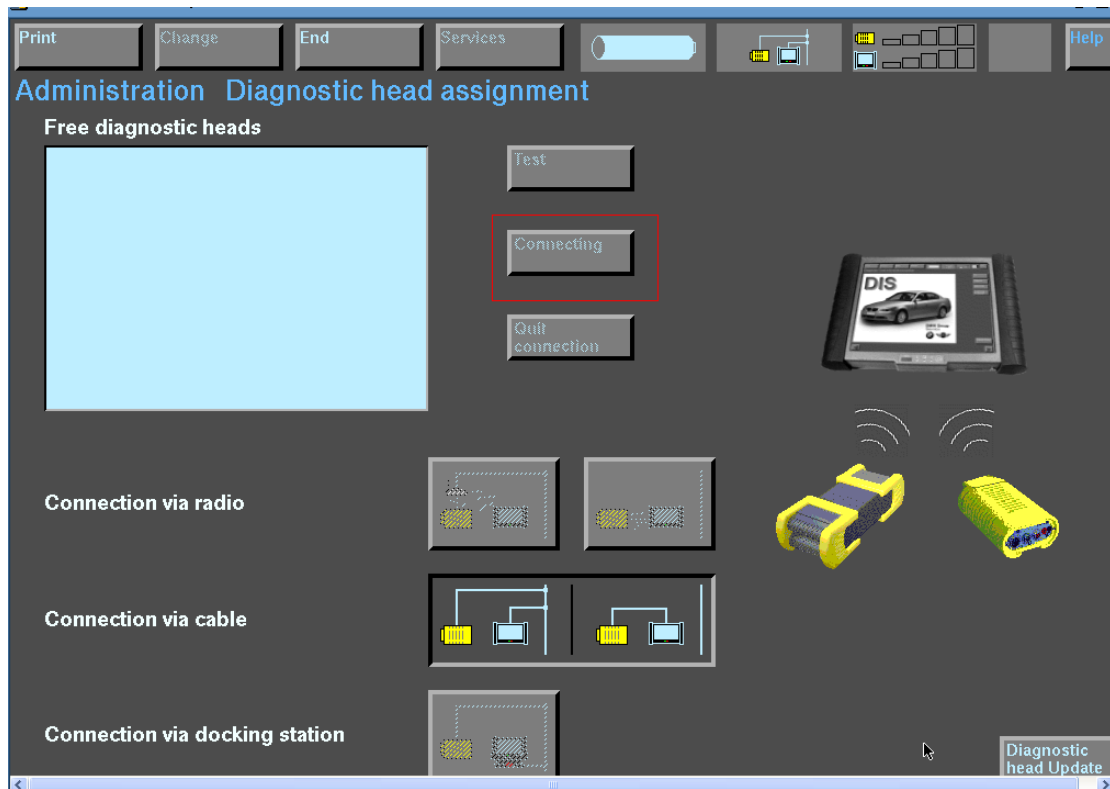


3 connection setup

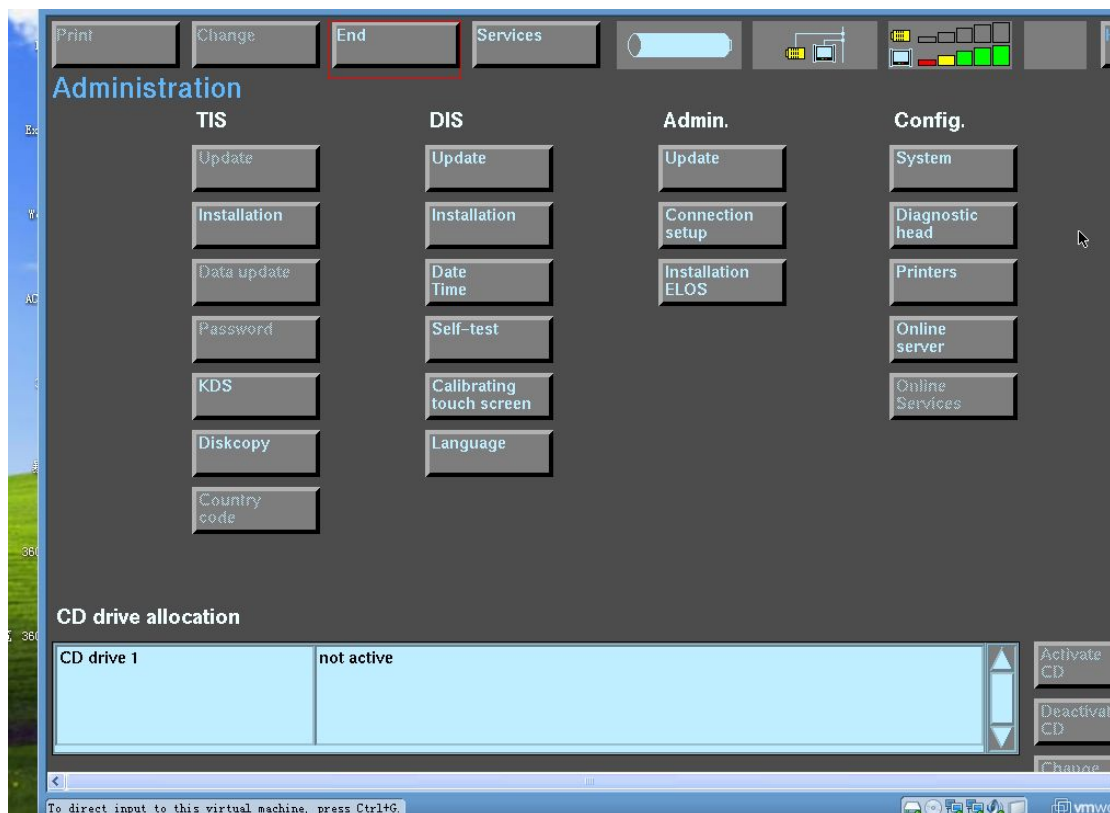




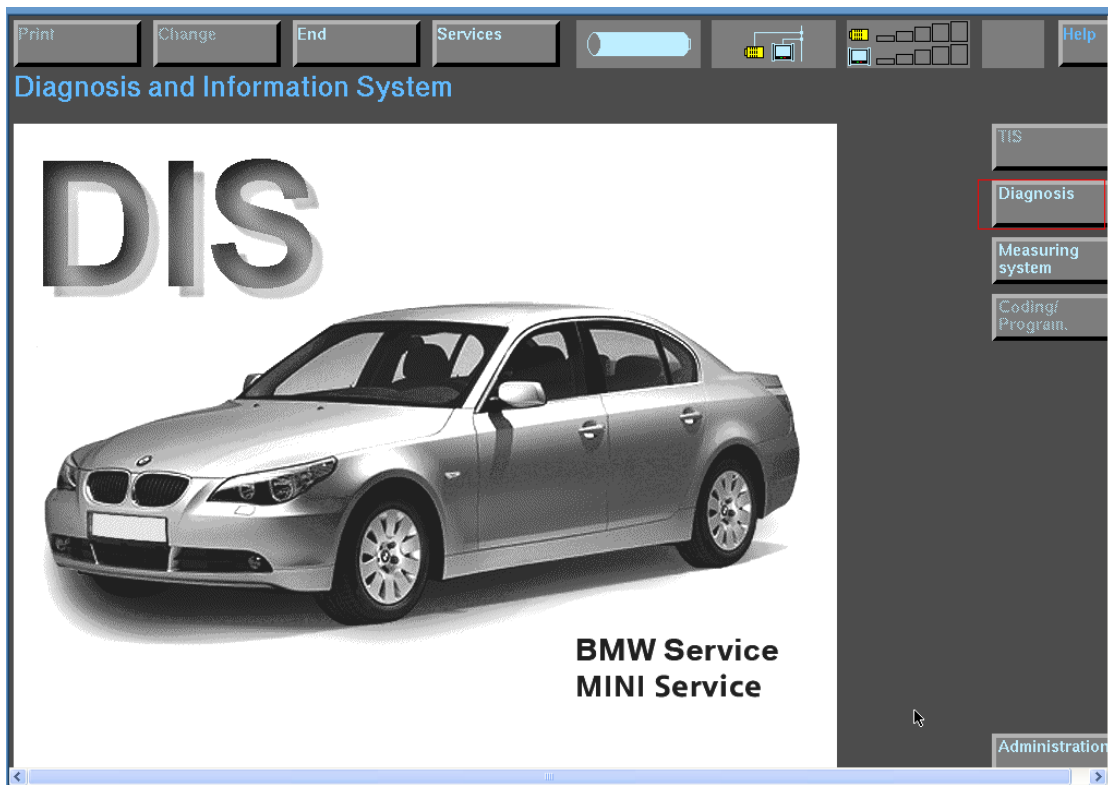
4 click connect when display the gt1 ID



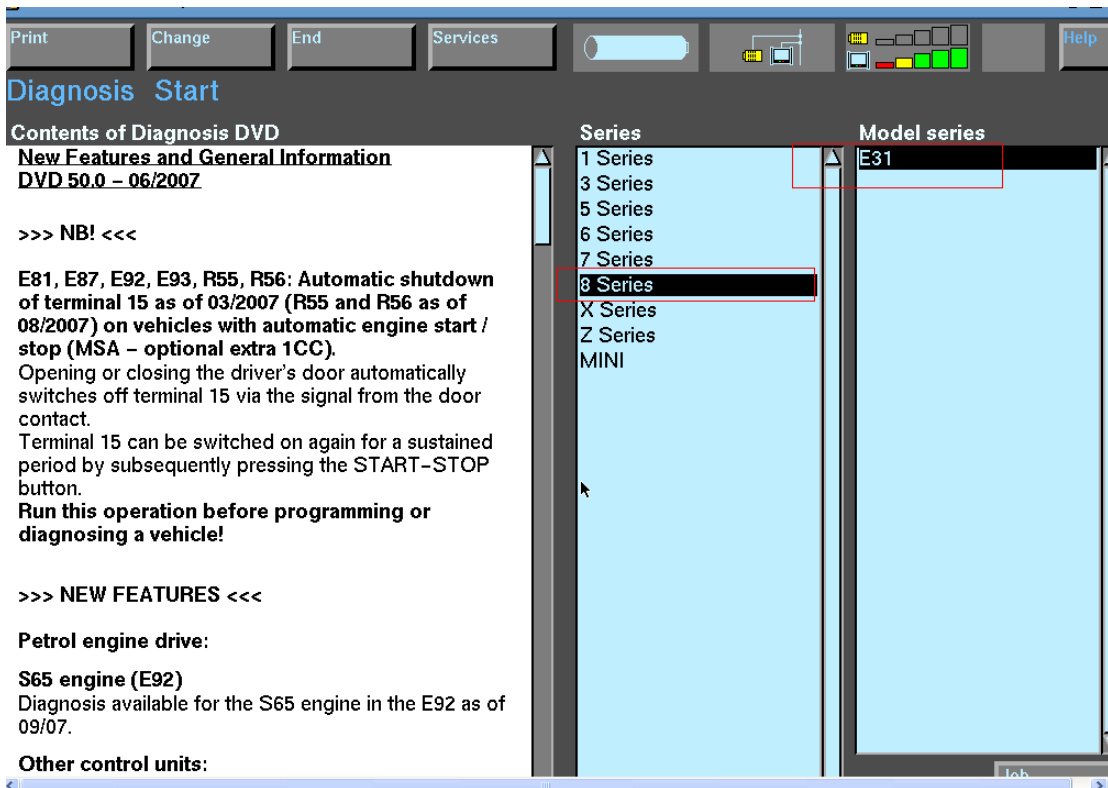
5 after connect ok , click END



6 Then go to Diagnostic



7 select your car



8 enter your car system

**Contents of Diagnosis DVD**  
**New Features and General Information**  
**DVD 50.0 – 06/2007**

>>> NB! <<<

**E81, E87, E92, E93, R55, R56: Automatic shutdown of terminal 15 as of 03/2007 (R55 and R56 as of 08/2007) on vehicles with automatic engine start / stop (MSA – optional extra 1CC).**  
Opening or closing the driver's door automatically switches off terminal 15 via the signal from the door contact.  
Terminal 15 can be switched on again for a sustained period by subsequently pressing the START-STOP button.  
**Run this operation before programming or diagnosing a vehicle!**

>>> NEW FEATURES <<<

**Petrol engine drive:**  
**S65 engine (E92)**  
Diagnosis available for the S65 engine in the E92 as of 09/07.

**Other control units:**

On-Auxiliary System (OAS) – F60, F61, F62, F63, F64, F65

Series	Model series
1 Series	E31
3 Series	
5 Series	
6 Series	
7 Series	
<b>8 Series</b>	
X Series	
Z Series	
MINI	

Job